



*Hudson River*  
PCBs SUPERFUND SITE

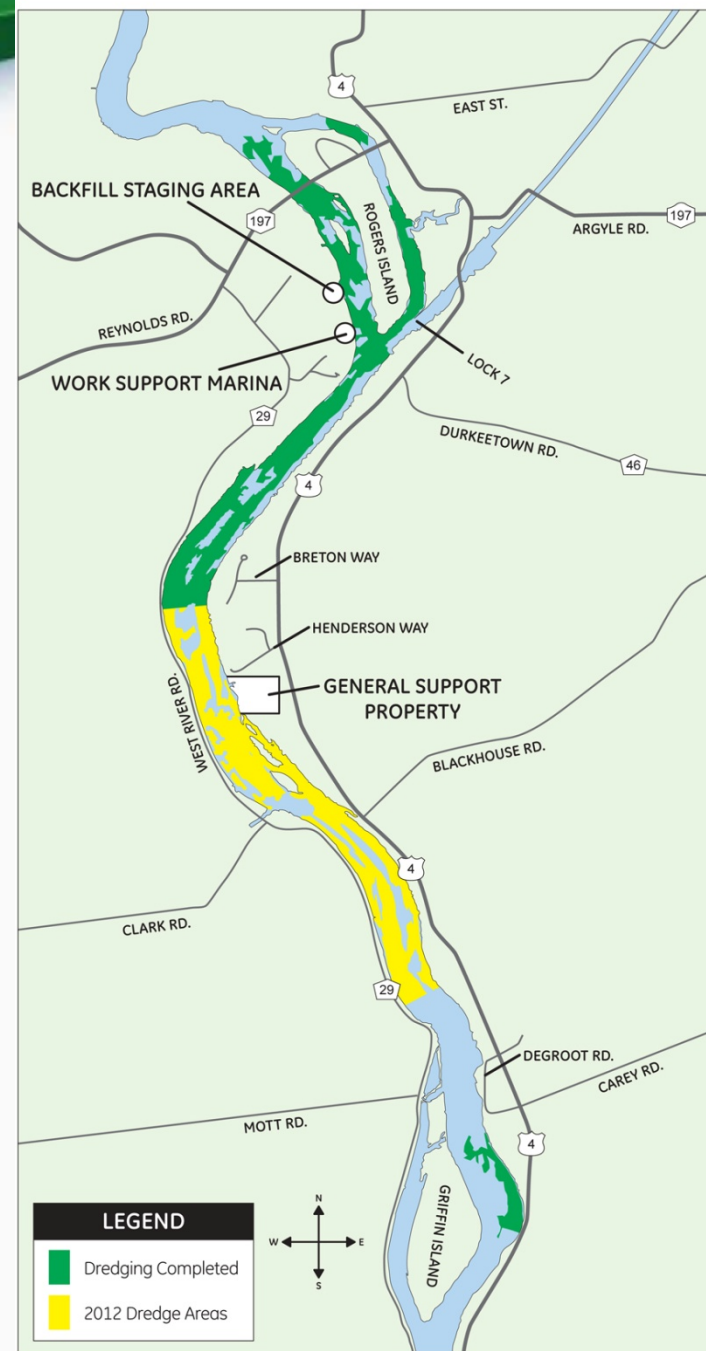
## Hudson River PCBs Superfund Site 2012 Project Update

June 28, 2012

# 2012 Dredging Review

- **Goal: 350,000 cubic yards**
- May - November
- 24/6 work schedule
- Dredging from Route 4 General Support Property (CU-26) to Griffin Island (CU-49)
  - Generally north to south
  - Three Sister Islands
- Engineering and Quality of Life Performance Standards

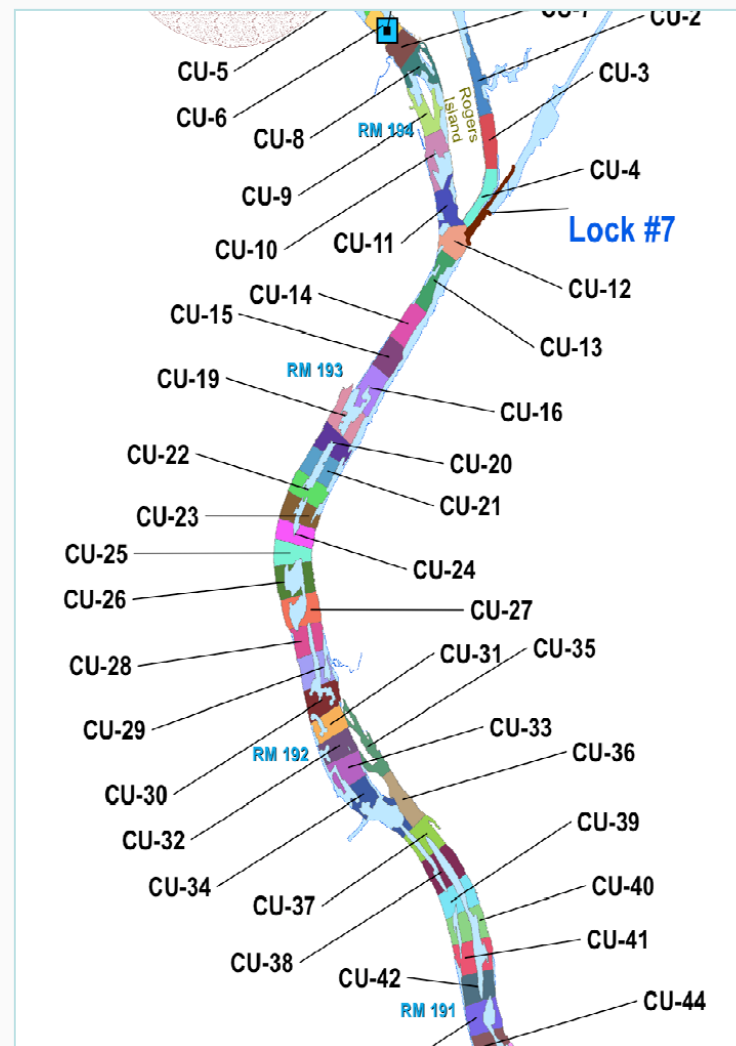
## 2012 Dredge Areas



# Update on Phase 2 Year 2: River Operations



- Dredging began May 9, 2012
- 4 dredges operating
  - Transload operation in Three Sister Islands Channel
- Operating in main stem and Three Sister Islands channel
  - CUs 26-31, 35-36
- Dredged 106,000 cubic yards thru June 17, 2012
- Capping percentages significantly below specified limits (~3%)





# Update on Phase 2 Year 2: Monitoring



## Water

- No Total PCB standard level exceedances to date
- Load at Lock 5 and Waterford also below standard

## Air

- Sporadic exceedances of residential air standard at facility and river corridor
- Best management practices implemented
  - Relocation of dredge operations
  - Covering higher-concentration sediments with water
  - Tracking, prioritizing barges with higher-concentration sediments for transport, unloading and processing

# Update on Phase 2 Year 2: Sediment Sampling



## **SEDC Coring Program**

- Goal is to improve delineation (fill in data gaps)
- Nearly 600 cores planned for sampling this year (CUs 71 – 100)
- Began mid-May and is expected to be completed in August
- Data will be used to adjust dredge prisms for future years

## **Surface Sediment Sampling**

- Goal is to assess changes in surface sediment concentrations
- Samples collected throughout River Section 2 from locations inside and outside CUs
- Approximately 53 locations planned for sampling (CUs 61 – 76)

# Update on Phase 2 Year 2: Facility Operations





# Update on Phase 2 Year 2: Facility Operations



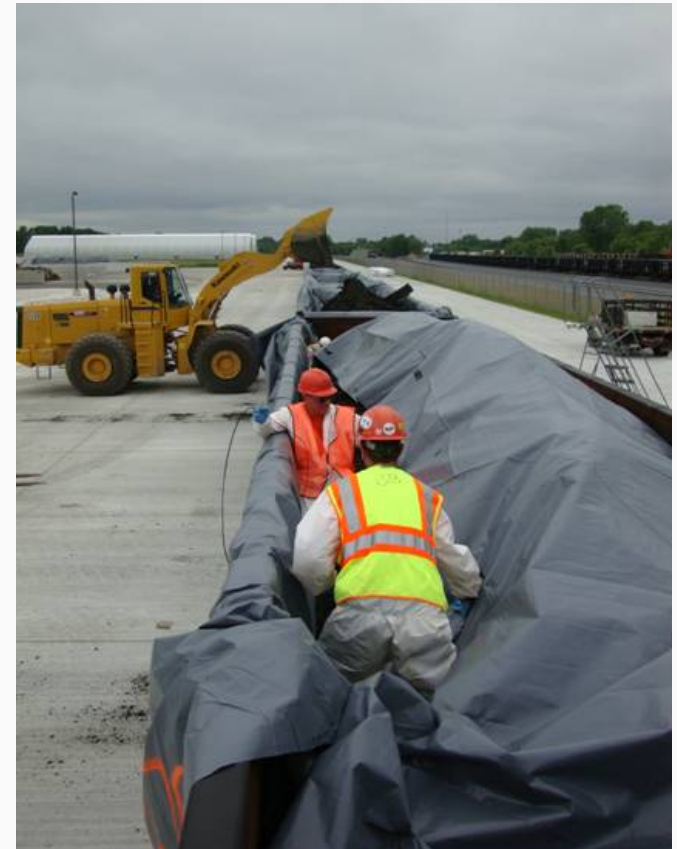
- Consistent 24/6 operations
- Unloaded >200 barges to date  
(~500 to 600 cu yds per barge) to date
- North and south unloading wharfs fully operational
  - Two sediment unloaders to unload barges
  - Two banks of size separation equipment
  - Unloading 6-10 barges each 24-hour period
- Unloading/processing keeping up with dredging
  - No current need to operate facility on Sunday schedule



# Update on Phase 2 Year 2: Transport



- Railcar loading began May 22, 2012
- Railcar shipping began June 3, 2012
- Material currently shipped to fully-permitted disposal facilities in Michigan (61 rail cars) and Oklahoma (93 rail cars)
- 10 unit trains shipped through June 25, 2012 (~700 rail cars)
  - Approximately 55,000 cu yds material shipped off-site





# Update on Habitat Reconstruction



- Phase 1 area planting completed in 2010
- Monitoring of Phase 1 areas this summer
- Harvesting of wild celery from Feeder Canal began week of June 25
- Planting to begin mid-July
  - Targeting CUs 9, 10 and 19





# Questions/Comments

