

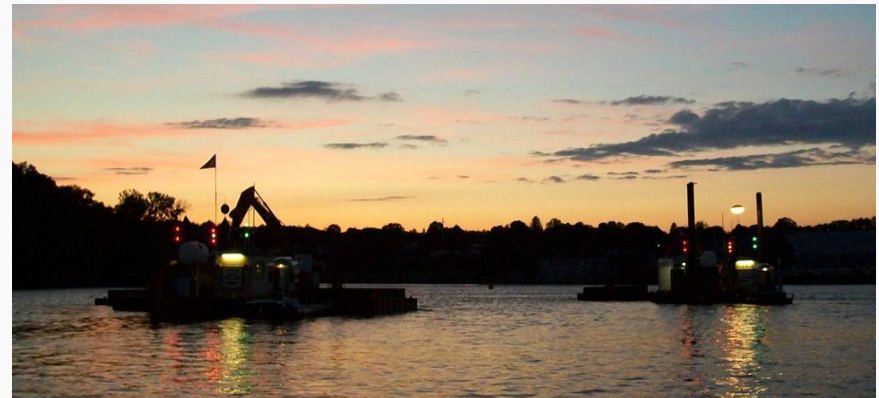
Community Advisory Group Meeting
Fort Edward Fire House
June 30, 2011

Phase 2 Year 1
Dredging/Project Update

Introduction



- Dredging
- Backfill/Capping
- Processing
- Transportation
- Habitat Reconstruction
- Special Studies
- Others
 - Quality of Life
 - Cultural Resources
 - Ongoing Activities



Dredging Summary



- Dredging started June 6th (late start due to high flows)
- 24/6 schedule (processing on Sundays needed for clay)
- Three dredges working
- Tree trimming and debris removal as needed
- Working in CUs -9, -10, -11 and -19 (*shallow area as flow permits*)
- Total sediment dredged past week was 11,670 C.Y.
- Total of 31,279 C.Y. to date (rate consistent with targets)







Dredging Summary



- Significant amounts of clay in CUs -9, -10, and -11
- Scow unloading has increased from 4 scows a day to 6 scows a day
- All monitoring data (water and quality of life) was in compliance
- No capping or backfilling to date
- Very little capping will be necessary in CU-9

Facility Improvements

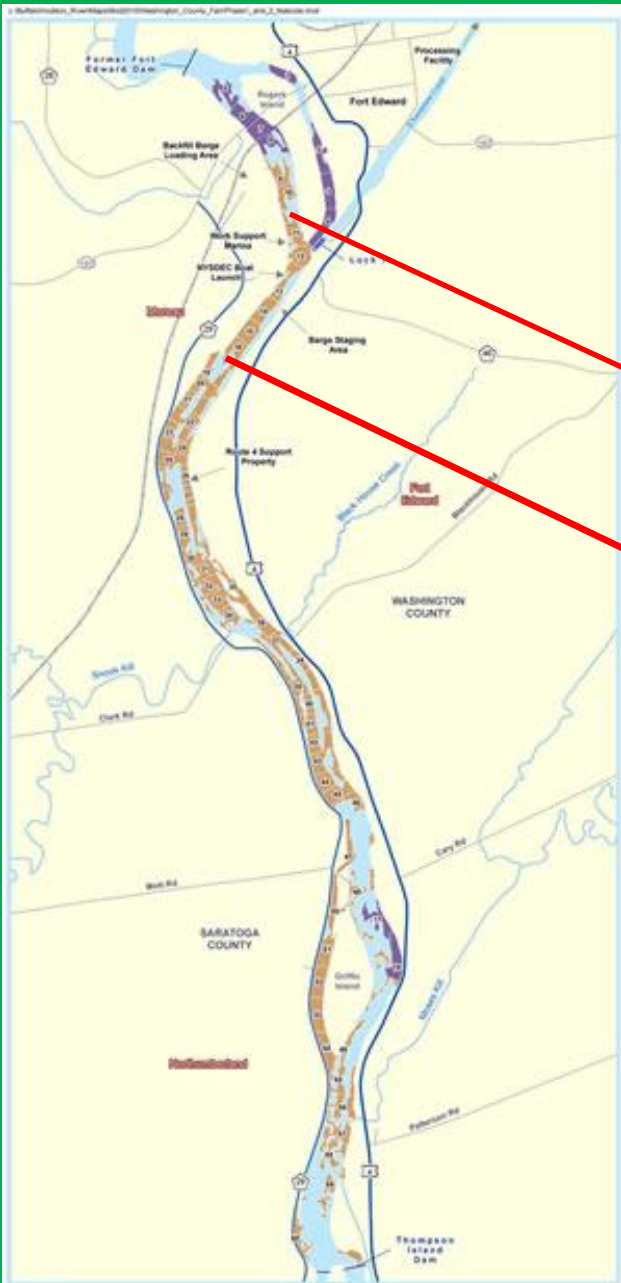




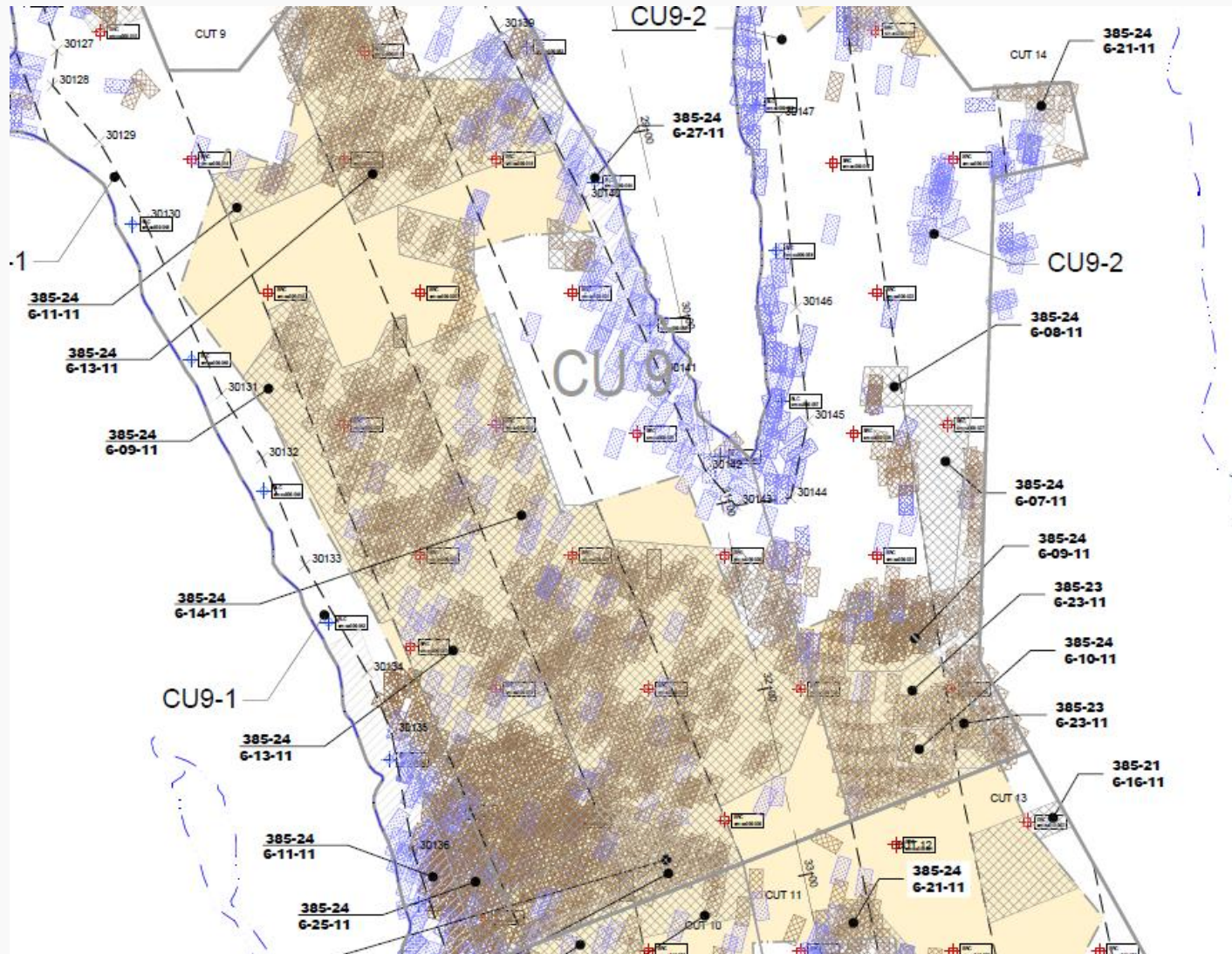
05/01/2011





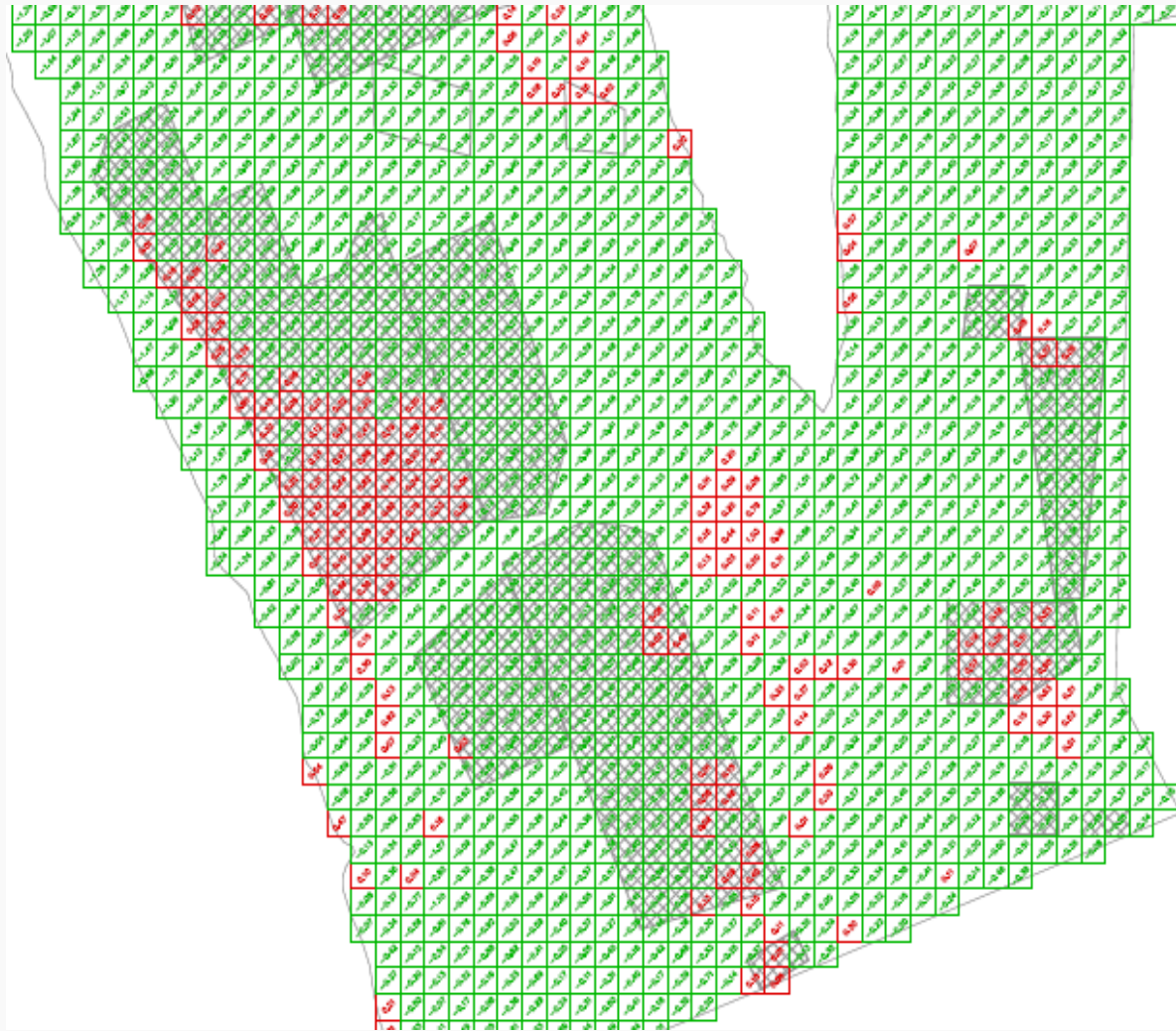
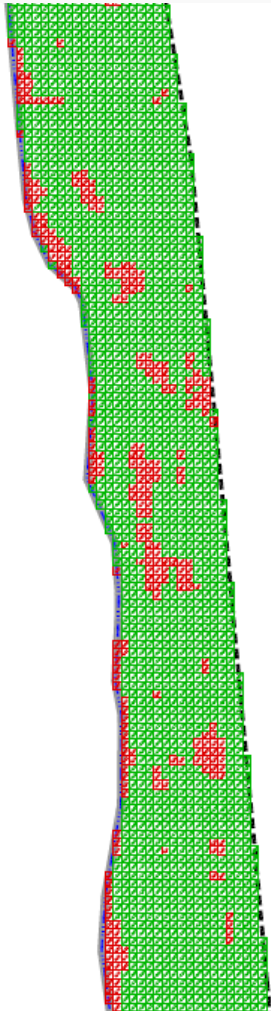


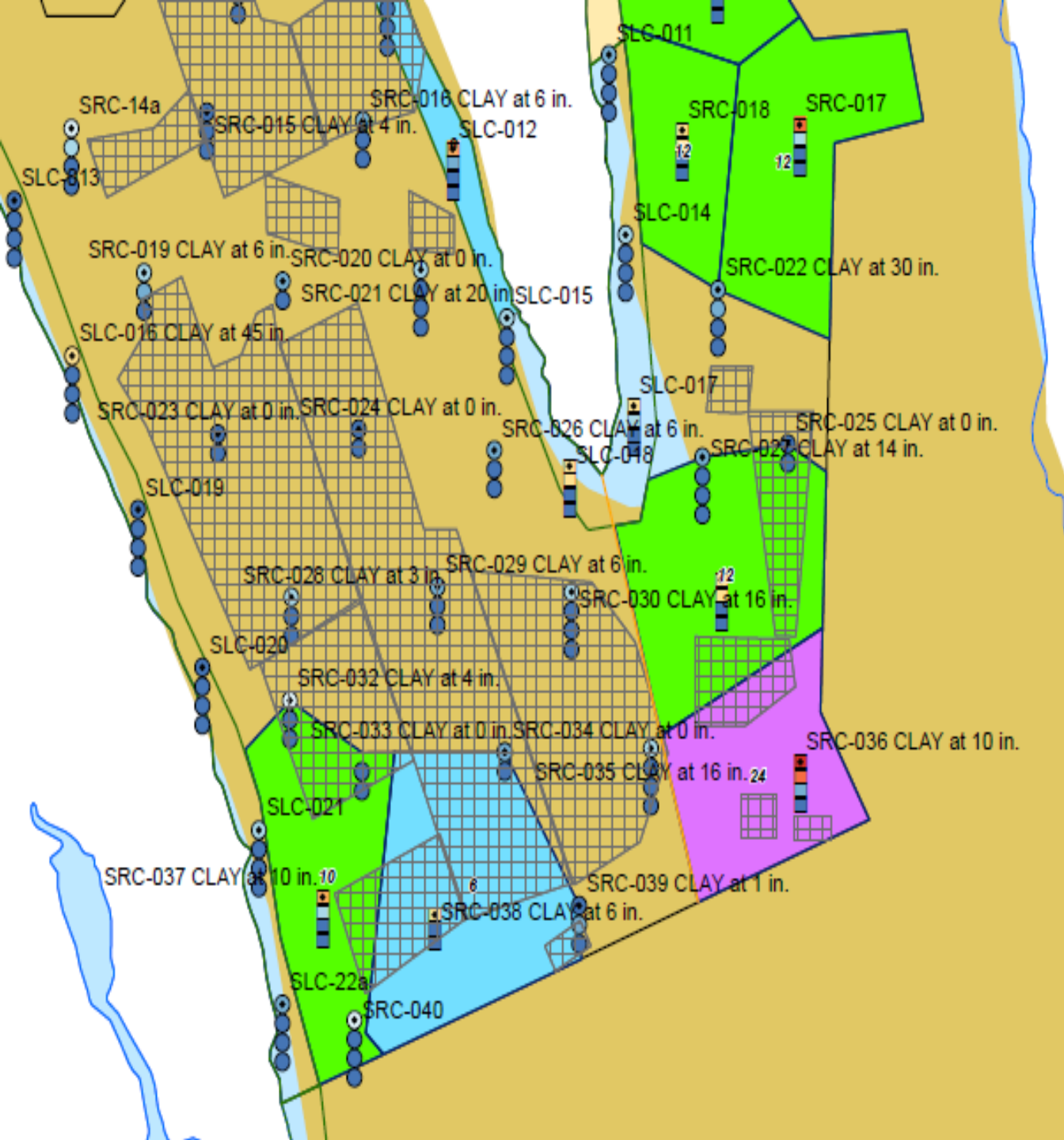
CU Compliance Review



CU Compliance Review

CU-9





Legend

- CU Sub-units
- Navigation Channel
- Shoreline
- Bridges
- Dams and Locks
- Inaccessible Location
- Abandoned Residual Node
- Compliant Residual Node
- Non-Compliant Residual Node

Tri+ PCB Concentration (mg/kg)

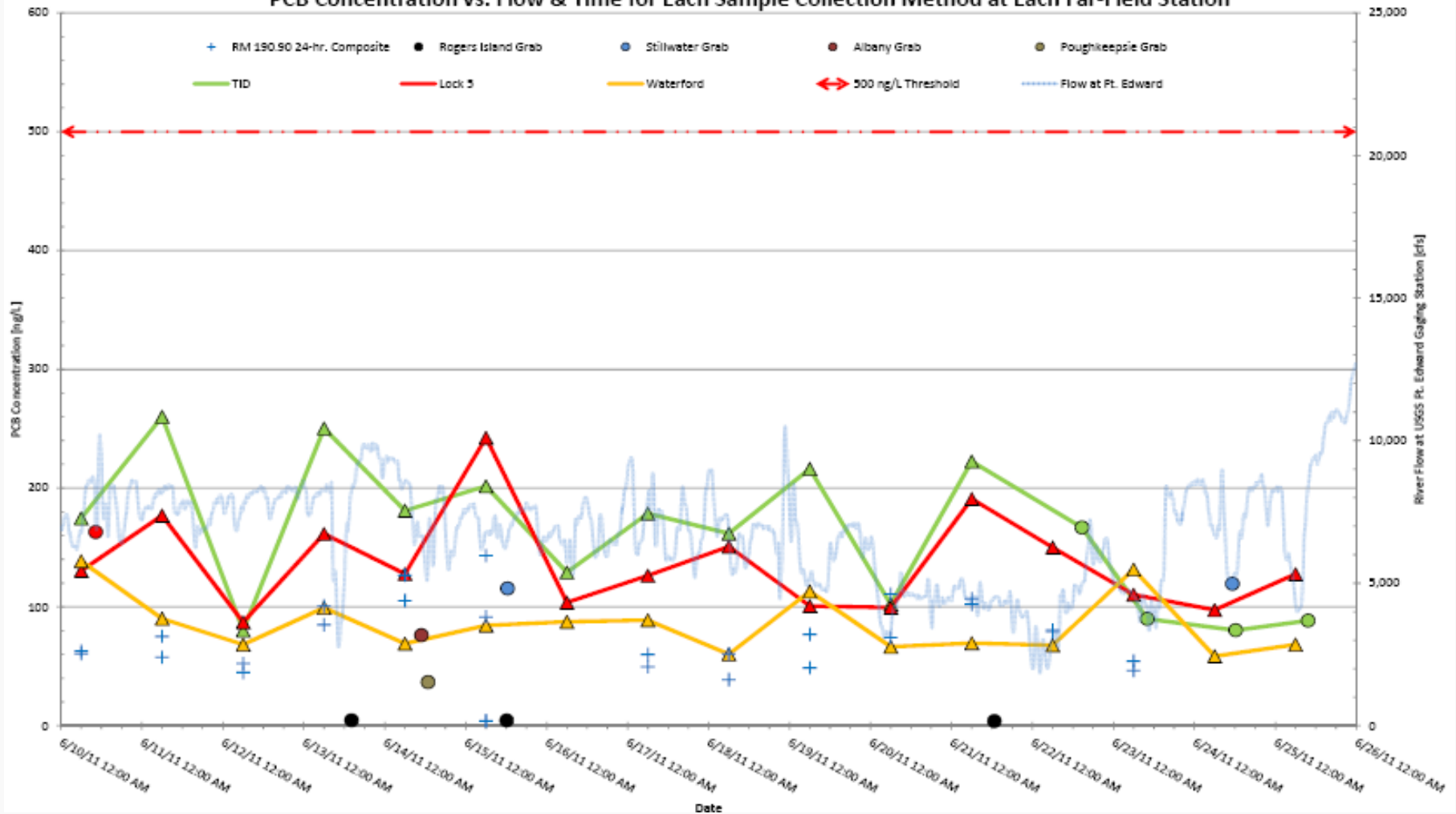
- 0.00 - 0.24
- 0.25 - 1.00
- 1.01 - 3.00
- 3.01 - 6.00
- 6.01 - 15.00
- 15.01 - 26.99
- 27.00 - 49.99
- 50.00+



Water Quality Data



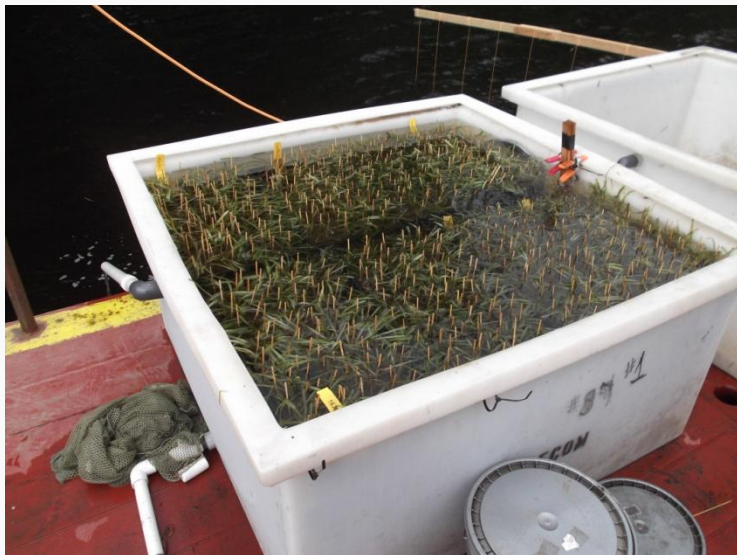
PCB Concentration vs. Flow & Time for Each Sample Collection Method at Each Far-Field Station





- PCB Water Column Release – evaluate change in concentration downstream of dredging
- PCB Deposition – sediment traps and surface sediment samples
- Sampling Station Diagnostics – sampling at station and in-river at sample ports
- Tributary – measure TSS
- Volatilization – measure PCB loss at dams
- Dredge Prism Design – co-located cores after first pass

Habitat Reconstruction (Phase 1 Areas)



Habitat Reconstruction (Phase 1 Areas)



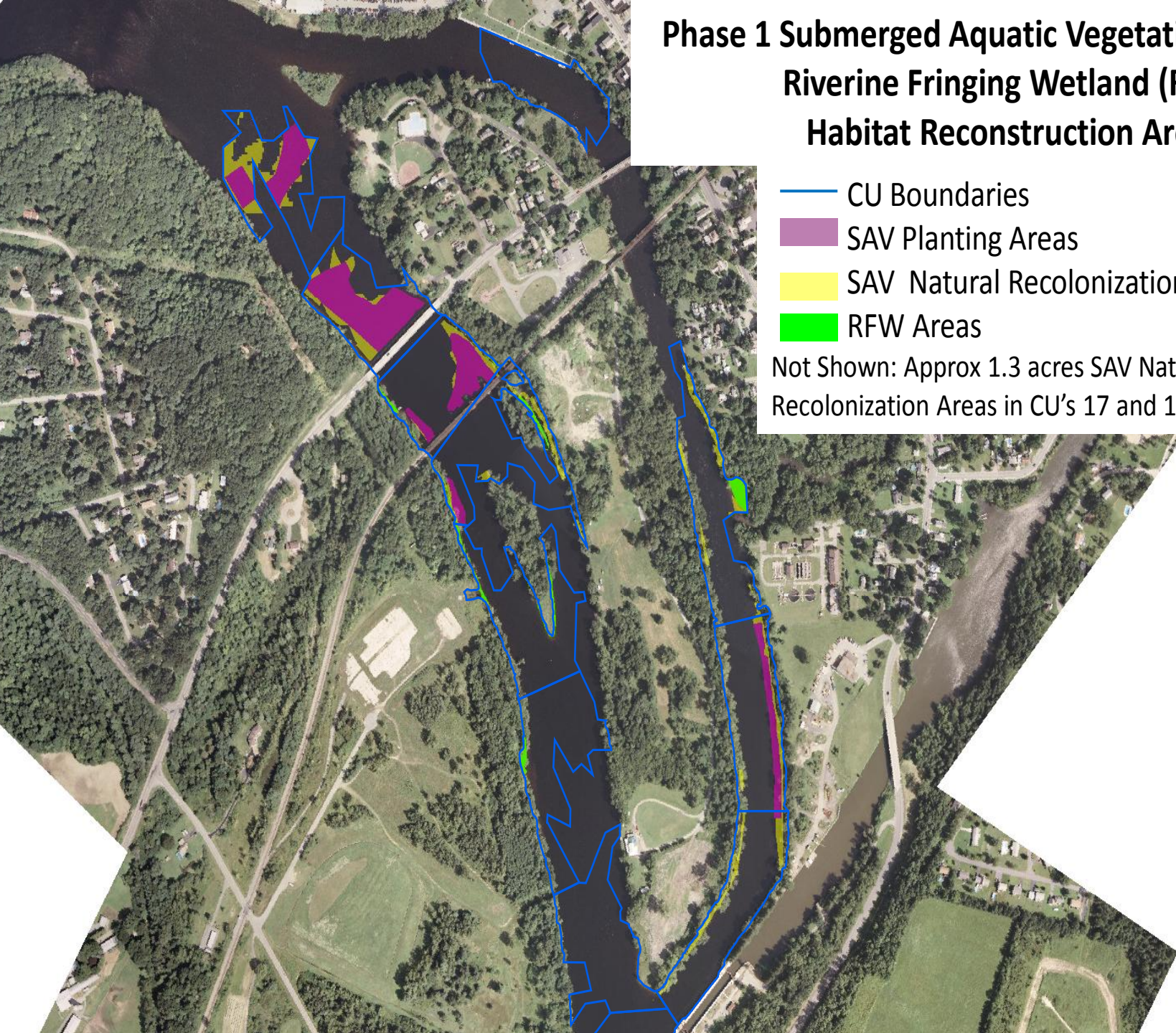
2011 Submerged Aquatic Vegetation Planting: Quantities of Planting Units by CU

| Planting Unit | CU-3 | CU-4 | CU-5 | CU-6 | CU-7 | CU-8 | Totals |
|-------------------|--------------|--------------|---------------|---------------|---------------|--------------|---------------|
| Wild Celery | 5,800 | 743 | 13,946 | 17,408 | 9,407 | 1,817 | 49,121 |
| American Pondweed | 1,706 | 219 | 4,615 | 6,891 | 2,766 | 535 | 16,732 |
| Water Lily | 1,170 | 440 | 0 | 0 | 300 | 800 | 2,710 |
| Totals | 8,676 | 1,402 | 18,561 | 24,299 | 12,473 | 3,152 | 68,563 |

Phase 1 Submerged Aquatic Vegetation (SAV) and Riverine Fringing Wetland (RFW) Habitat Reconstruction Areas

- CU Boundaries
- SAV Planting Areas
- SAV Natural Recolonization Areas
- RFW Areas

Not Shown: Approx 1.3 acres SAV Natural Recolonization Areas in CU's 17 and 18



Other Ongoing Activities



- Cultural resources work
 - Observations as dredging work continues
 - Diving on areas in CU-29 and CU-30
 - Terrestrial and underwater surveys (south of CU-30)
- Coring Program (south of CU-30)
 - To improve delineation of depth of contamination
 - 700 Cores planned this year (CU-30 to CU-70)
 - Using both vibracore and sonic coring

Questions

