

Community Advisory Group Meeting



September 19, 2013



Hudson River
PCBs SUPERFUND SITE

2013 Dredging Review



- 2013 Goal: 350,000 cubic yards
- Approach to dredging, processing, backfill and disposal similar to prior years
- Longer transport distances between dredging and processing location
- May — November (depending on weather and river flow)
- 24/6 work schedule

2013 Dredging Review (cont.)



- 23 CUs initially targeted for 2013 dredging:
 - North of Thompson Island Dam (CUs 49-60)
 - From Lock 6 to Lock 5 (CUs 67-78)
- Backfill/cap material placement
 - Moreau Backfill Loading Area
 - Saratoga Backfill Loading Area
- Habitat reconstruction
 - About 150,000 plants



2013 Dredge Areas



LEGEND	
	Areas to be Dredged
	Dredging in Progress
	Backfill in Progress
	Activities Completed

Phase 2 Year 3: River Operations Shoreline Support Properties



Moreau Backfill Loading Facility



Route 4 Support Property



Route 4 Crew Change Area

Phase 2 Year 3: River Operations Shoreline Support Properties



Saratoga Backfill Loading Area



Phase 2 Year 3: River Operations



- Dredging began April 29, 2013
 - 19 weeks completed (to-date)
- 4-5 dredges operating
- Dredged more than 466,000 cubic yards through Sept. 14, 2013
 - 22 CUs completed or active
 - More than 110 acres dredged
 - Surpassed annual goal of 350,000 cubic yards (130%)
 - Total to date 1.8 M cubic yards (67%)
- Backfilling/Capping progress
 - 652,000 square yards (135 acres) covered
 - Backfill/cap complete or underway in 17 CUs
- Capping percentages below specified limits (5.7%)

Phase 2 Year 3: Monitoring



Water

- No Total PCB standard level exceedances to date
- PCB Load at Stillwater and Waterford continue to remain below standard



Phase 2 Year 3: Monitoring



Air

- Sporadic increases in PCB levels at facility and river corridor
 - 3% of total samples collected
- Best management practices implemented
 - Move dredge operations between high- and low-concentration areas
 - Cover higher-concentration sediments with water
 - Track, prioritize barges with higher-concentration sediments for transport, unloading and processing

Phase 2 Year 3: Facility Operations



Phase 2 Year 3: Facility Operations



- Consistent 24/6 operations
- More than 800 barges unloaded to date
- ~6,100 filter press drops
- Unloading/processing keeping pace with dredging
 - Generally not necessary to operate facility on Sundays



Phase 2 Year 3: Transport



- Railcar shipping began May 18, 2013
- Material currently shipped to EPA-approved disposal facilities in Ohio (non-TSCA) and Oklahoma (TSCA)
- 46 unit trains (each 93 rail cars carrying 106 tons each) shipped through Sept 16, 2013
 - About 442,000 tons of material shipped off-site
 - On-site staging piles well below project limits



Phase 2 Year 3: Next Steps



- Preparing to move south of Schuylerville (CUs 79-84)
 - Outreach to shoreline residents in progress
- Potentially begin dredging in CUs 99-100 in October
- Land-locked area
- November – Begin demobilize equipment
- Winterize processing facility and equipment
- Complete shipping of material off-site by December 31, 2013
- Plan for 2014 (Phase 2 Year 4)

Certification Units 59 and 60

KEY:

- River Mileposts
- USA Major Roads
- ▬ Bridges
- Primary Railroads
- Lock/Dam
- Stream/River
- Hudson River
- ▭ Phase 2 Year 3 (2013) and Future Dredging Areas



Certification Units 79 through 84

KEY:

- River Mileposts
- USA Major Roads
- ▬ Bridges
- Primary Railroads
- Lock/Dam
- Stream/River
- Hudson River
- ▭ Phase 2 Year 3 (2013) and Future Dredging Areas



Certification Units 79 through 84 (cont.)

KEY:

- River Mileposts
- USA Major Roads
- ▬ Bridges
- Primary Railroads
- Lock/Dam
- Stream/River
- Hudson River
- ▭ Phase 2 Year 3 (2013) and Future Dredging Areas

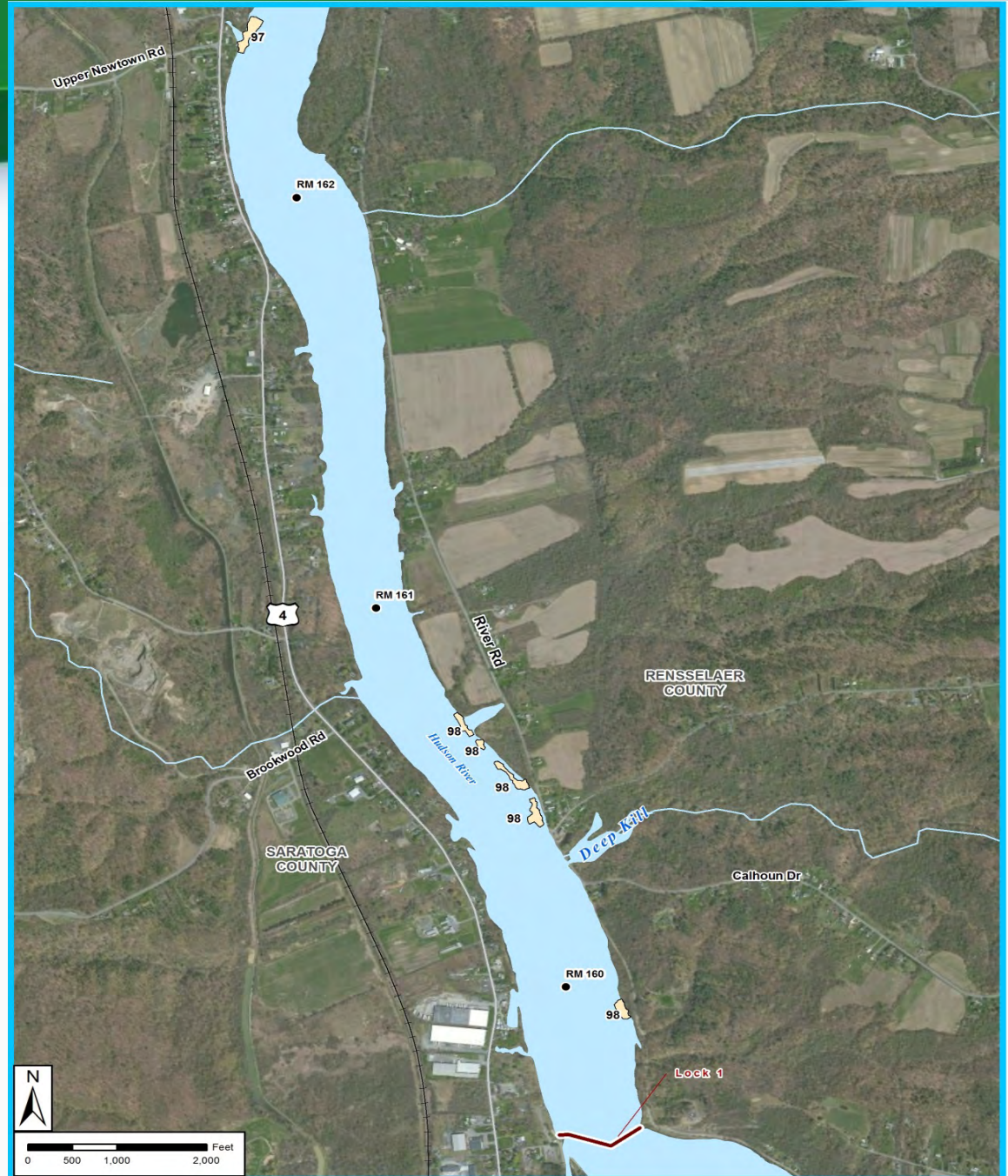


Certification Units 97 through 100

KEY:

- River Mileposts
- USA Major Roads
- ▬ Bridges
- + + Primary Railroads
- Lock/Dam
- Stream/River
- Hudson River
- ▭ Phase 2 Year 3 (2013) and Future Dredging Areas

Hudson River
PCBs SUPERFUND SITE



Certification Units 97 through 100 (cont.)

KEY:

- River Mileposts
- USA Major Roads
- ▬ Bridges
- +— Primary Railroads
- Lock/Dam
- Stream/River
- Hudson River
- ▭ Phase 2 Year 3 (2013) and Future Dredging Areas



Other Ongoing Activities



- Cultural Resources
- Floodplains
- Habitat Reconstruction
- Community Information and Outreach



Spill Response Boat

Questions/Comments

