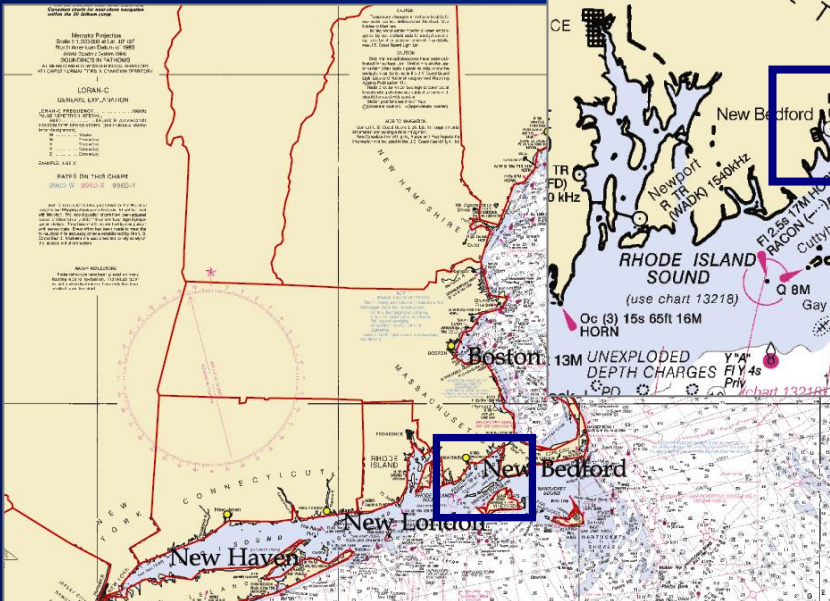
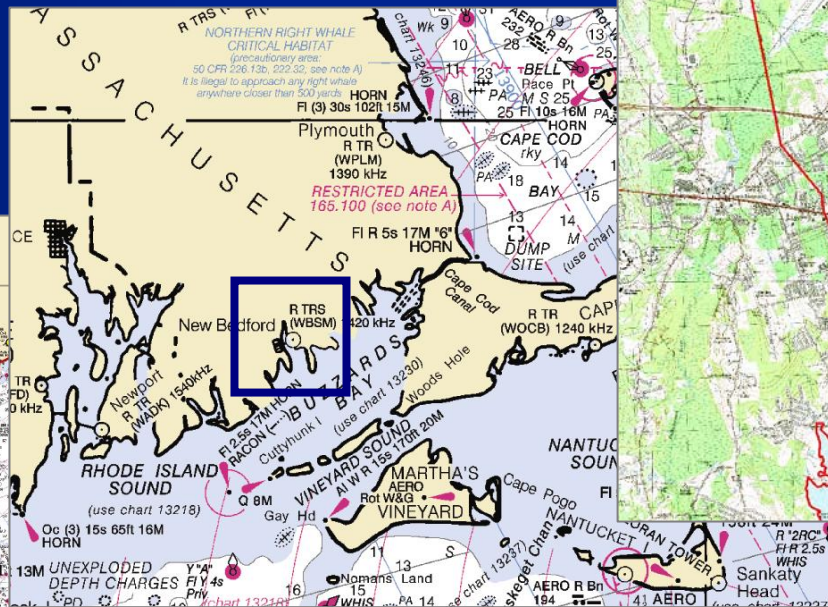
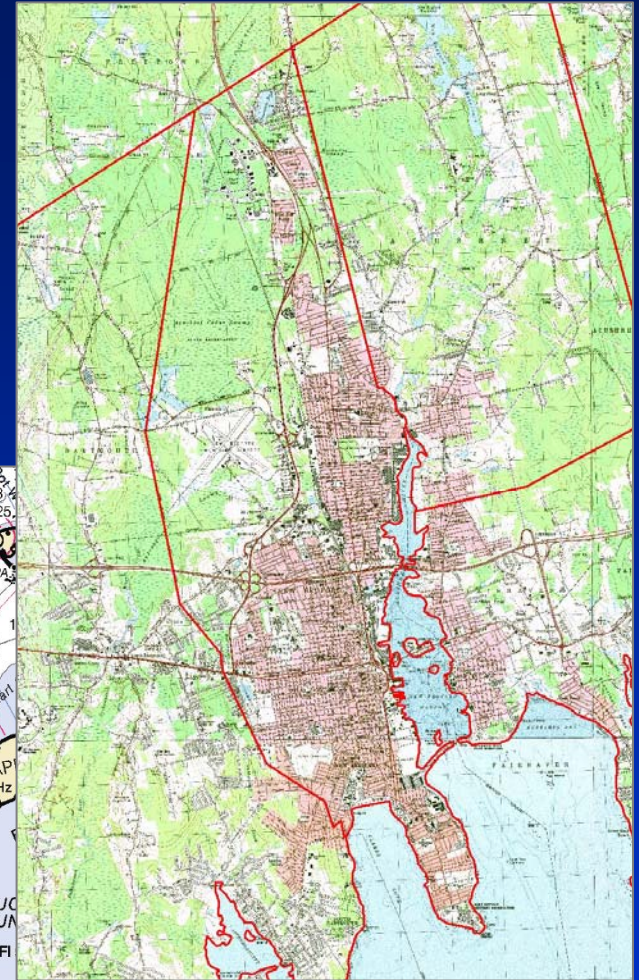


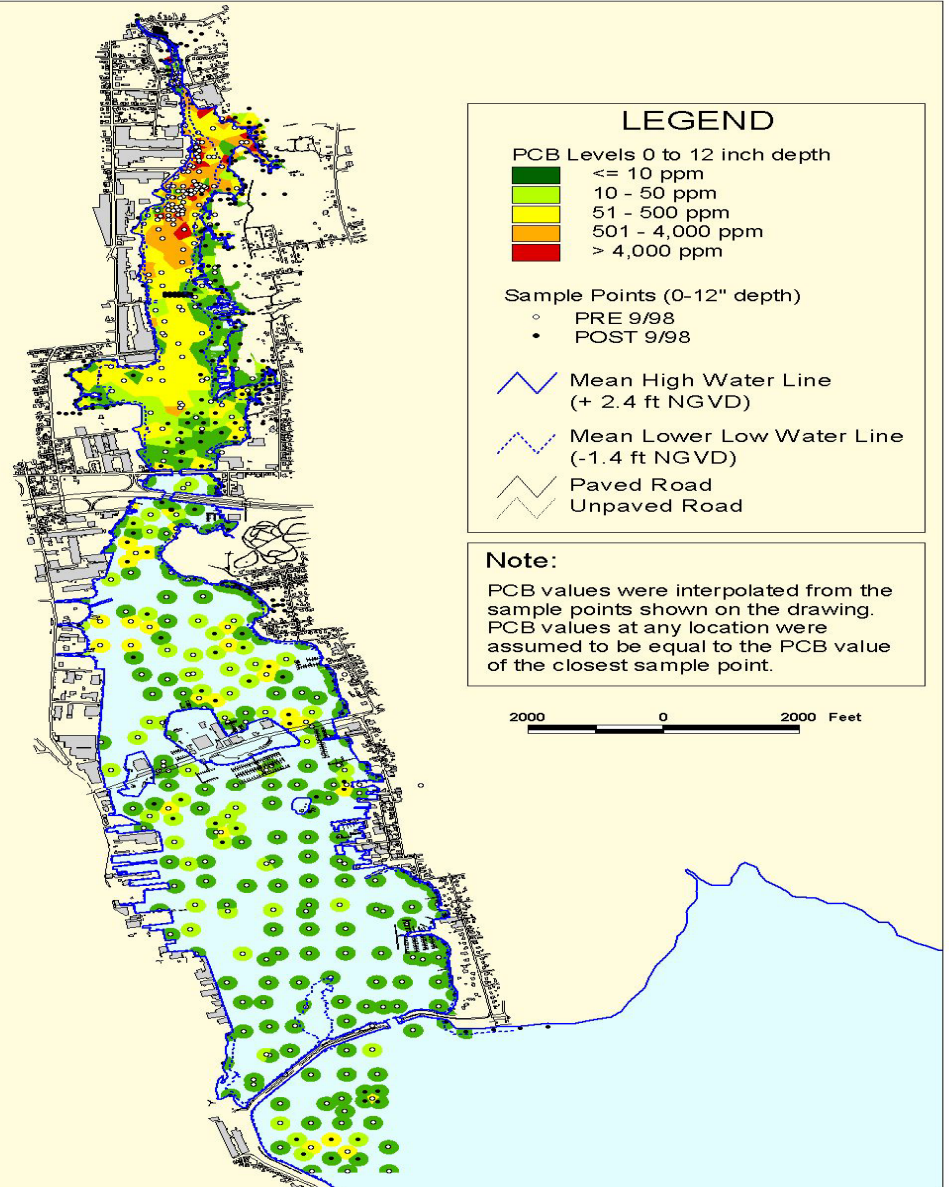
New Bedford Harbor Superfund Cleanup

Creating Opportunities Through Partnerships, Creativity &
Tenacity



New Bedford is located on Buzzards Bay in Southeastern Massachusetts





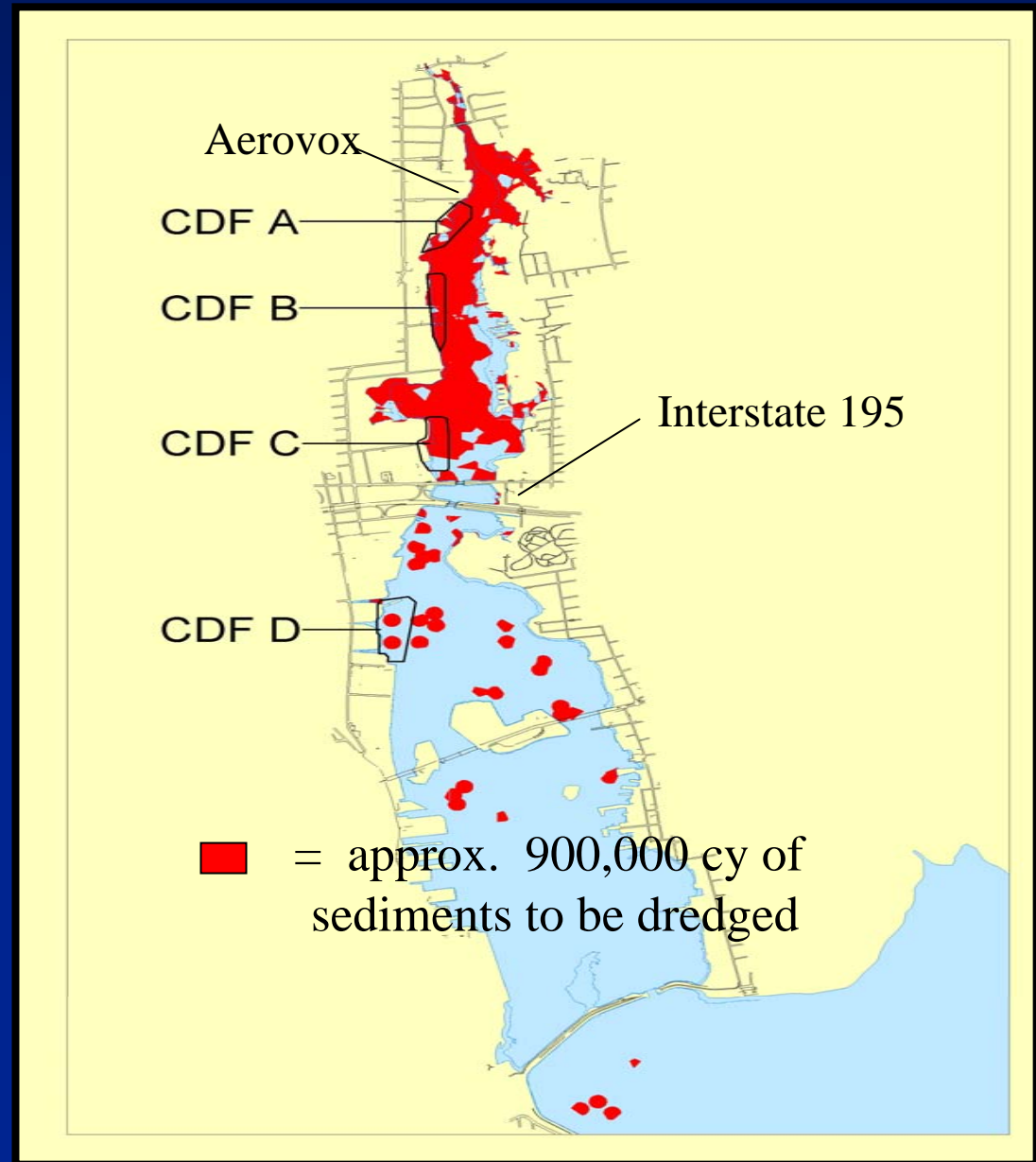
Yesterday's
Economic Engines
Created Today's
Environmental
Challenges

In 1990 ROD I is signed

- remedy for the 5 acre hot spot area
- called for dredging and on-site incineration of PCB-contaminated sediments above 4,000 ppm
- lack of leadership from the Mayor's Office
- vehement congressionally-supported opposition
- led to creation of the "Superfund Forum"
- Amended in 1999 to provide for dewatering and off-site landfilling

ROD II - 1998

- CDFs - Confined Disposal Facilities
- Enough sediment to fill 125 football fields three feet high



In 1998 Fred Kalisz became Mayor of New Bedford

- history with the Superfund process as a City Councilor
- willingness to think out of the box
- “positive collateral environmental development” (PCED)
- desire to build partnerships



In 2001 New Bedford was chosen as a Brownfields Showcase Community

- created new opportunities for dialogue with EPA
- allowed us a forum and process to pursue out of the box strategies
- encouraged partnerships
- provided an “embedded” federal coordinator



Our planning allowed us to advocate for CDF designs that would accommodate the reuses that benefited our community



CDF D needed to have 1000 psf loading capacity to accommodate marine industrial uses since it was located in the Designated Port Area

Through North Terminal 2010 and our Brownfields Plans we were able to push the envelope and leverage other types beneficial uses



New Bedford Railyard



Riverside Park

Through our Portfields Plans we were able to push the envelope and dredge our harbor which had not been dredged in 30 years



Today, through these efforts.....



Today, through these efforts we also have a strong proactive partnership with the EPA and the ACOE

Aerovox



The building and property were supposed to be remediated per a 1997 TSCA order. But the company subsequently went bankrupt.

A strong proactive partnership that benefits the community

- EPA/USACE team will prepare the design
- \$8 million cooperative agreement with the city for remedial action
- city to issue two RFPs jointly (to be procured with one contract):
 - remediation RFP
 - redevelopment RFP



So what have we learned?

- Cognitive Restructuring
 - Opportunities not Challenges
 - Yes we can !!
- Build Partnerships & Coalitions
- Craft Creative Consensus Based Plans
- Gather a Strong Creative Team
- Seek to Leverage Other Public Investments
- Don't Accept "No" as an Answer

Thank You !

