

# Upcoming Remedial Work at the GE Hudson Falls Plant Site

Community Advisory Group Meeting  
May 24, 2007

Division of Environmental Remediation  
New York State  
Department of Environmental Conservation



# Remedial Program

## GE Hudson Falls Plant Site

- Record of Decision (ROD) issued March 16, 2004
- ROD identifies selected remedies for overburden soils, and overburden/bedrock groundwater



Allen Mill

Water Treatment Plant

Building 1

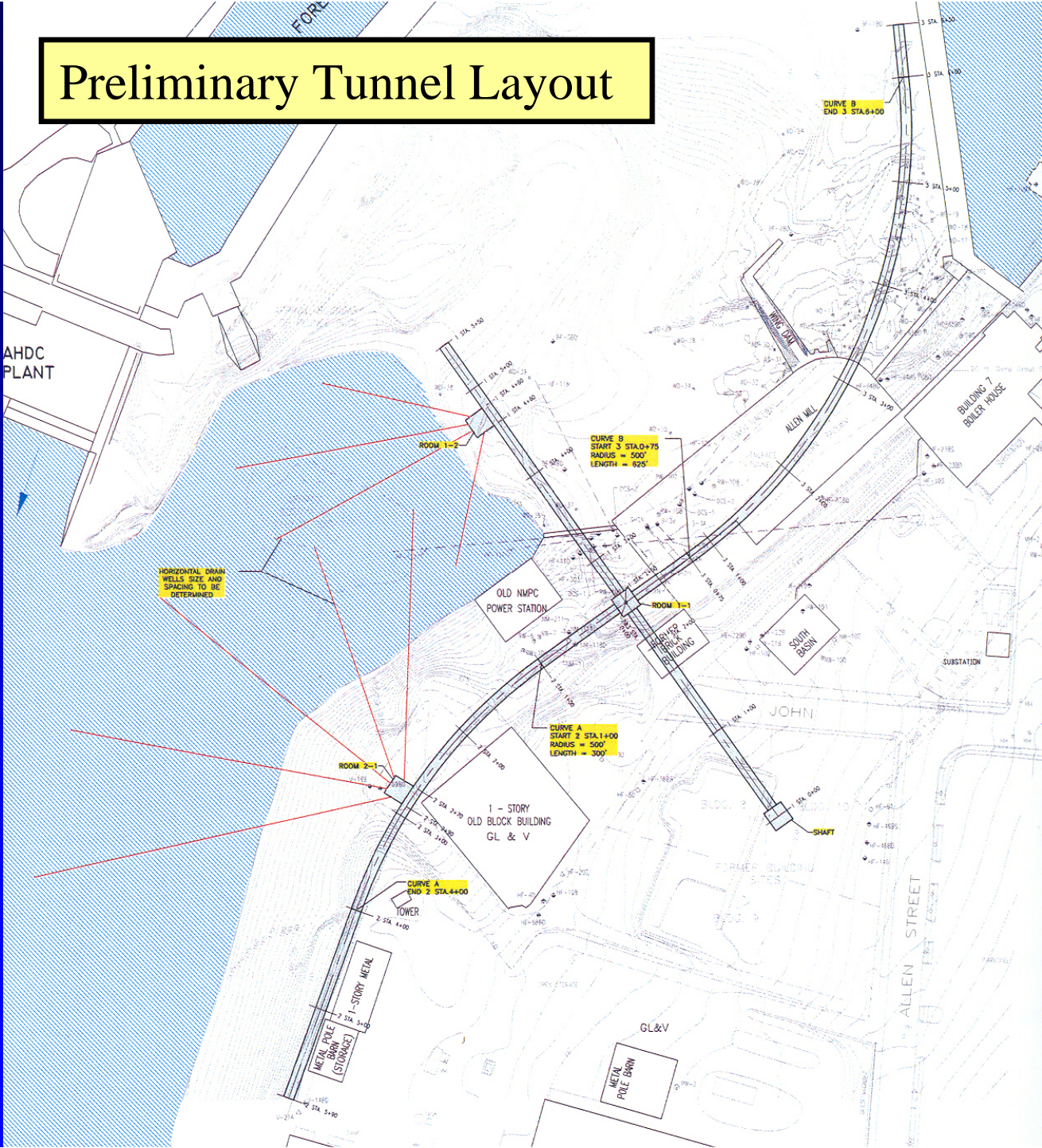
## Soil Remedy: Treatment/Disposal

- Building decommissioning and demolition
- Soil treatment and/or disposal, with cleanup level determined to be protective of groundwater
- Treatment technologies to be selected in design
- Monitoring program
- Institutional controls

## Groundwater Remedy: Enhance Existing Remedial System with Tunnel and Drain System

- Install and operate a tunnel and drain system along the western boundary of the site to supplement the existing system
- Expand the existing wastewater treatment plant from 125 to 375 gallons per minute
- Monitoring program and institutional controls

# Preliminary Tunnel Layout



# Remedial Work Starting Spring 2007

- Limited removal of contaminated soils
- Compartments 1 and 3
- Soil removal to allow access for construction of tunnel drain collection system – groundwater portion of site remedy

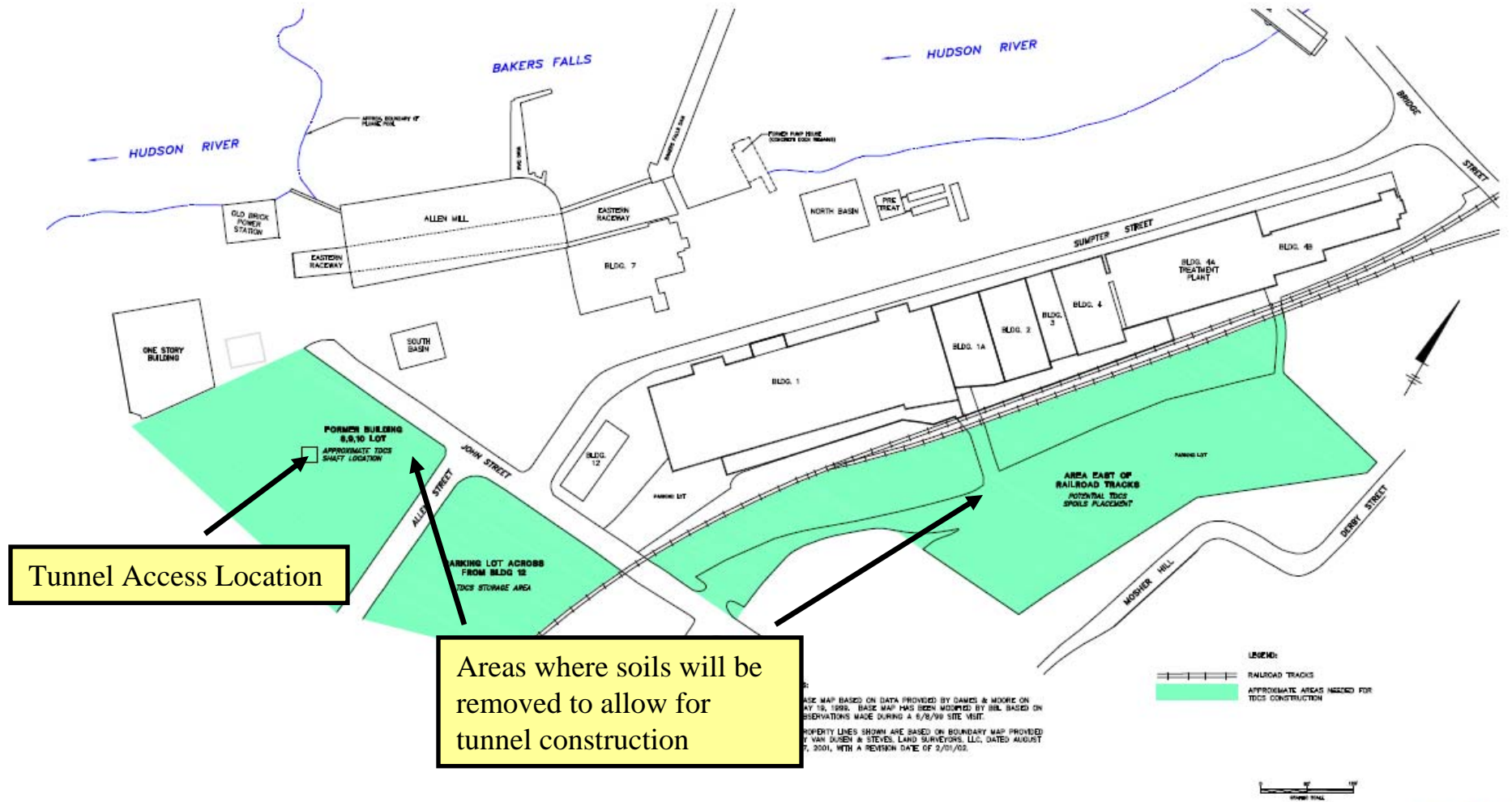
# Soil Removal Areas

- Compartment 1 – former Building 8, 9, 10 lot at the west end of John Street, west of Allen Street
- Compartment 3 – east of rail line, west of Derby Street and Mosher Hill Road, north of John Street



# Map of GE Hudson Falls plant site, displaying key locations for upcoming remedial projects at the site in 2007

Figure 1



Tunnel Access Location

Areas where soils will be removed to allow for tunnel construction

BASE MAP BASED ON DATA PROVIDED BY DANES & MOORE ON MAY 19, 1999. BASE MAP HAS BEEN MODIFIED BY BBL BASED ON OBSERVATIONS MADE DURING A 6/8/00 SITE VISIT.  
PROPERTY LINES SHOWN ARE BASED ON BOUNDARY MAP PROVIDED BY MARK SUSEN & STEVEN LAND SURVEYORS, LLC, DATED AUGUST 7, 2001, WITH A REVISION DATE OF 2/01/02.

LEGEND:  
RAILROAD TRACKS  
APPROXIMATE AREAS NEEDED FOR TDS CONSTRUCTION

L. O'NEAL, CIVIL ENGINEER  
P. 10/20/01/11/04  
12/23/04 10:40 AM L.P. HES  
C:\0001027\1001024.DWG



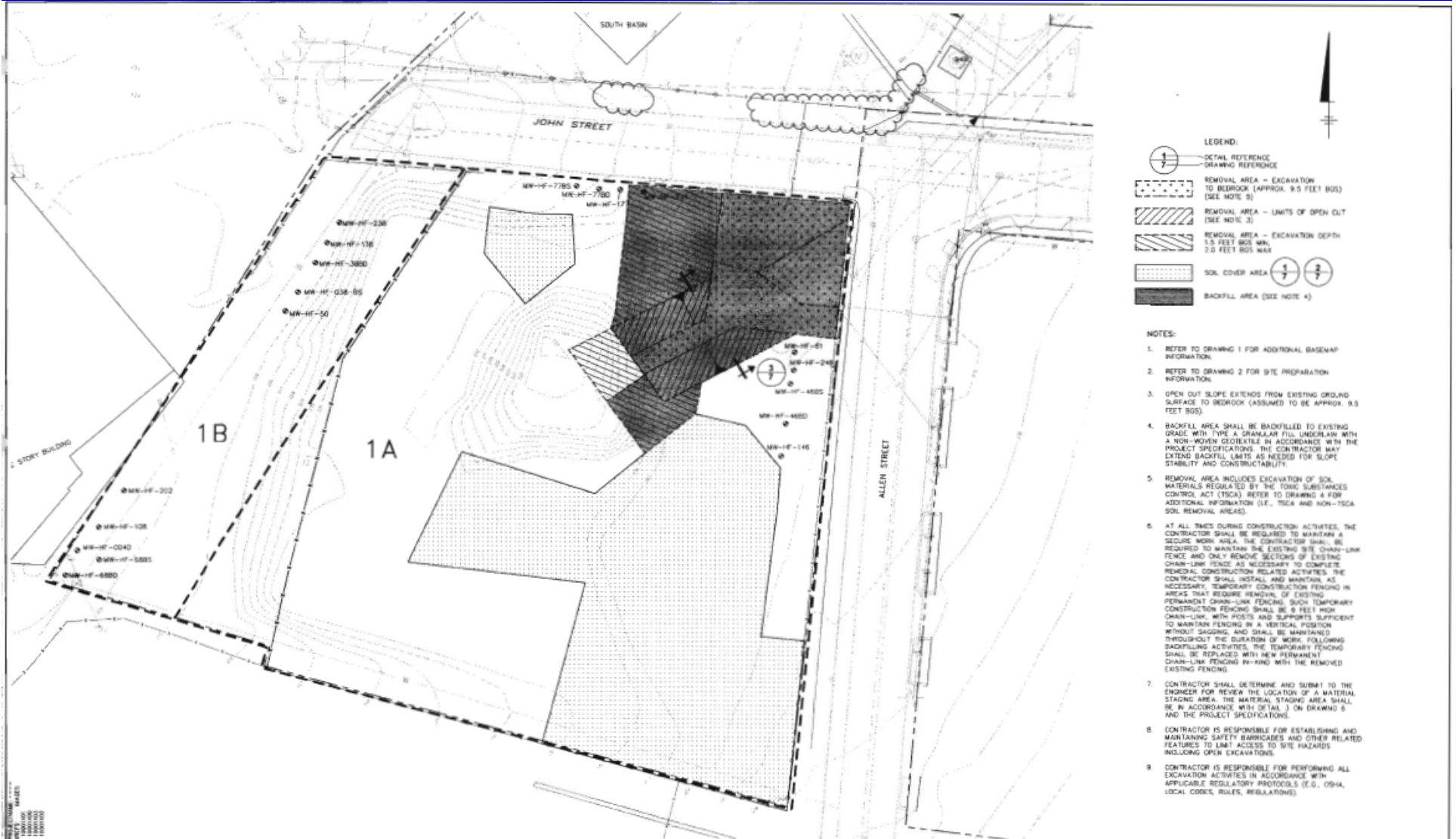
**Photo of GE Hudson Falls plant site, displaying key locations for upcoming remedial projects at the site in 2007**



Tunnel Access Location

Areas where soils will be removed to allow for tunnel construction

# Map showing excavation area in Compartment 1



ORIGINAL SCALE APPLIES TO 22"x34" DRAWING

1" = 30'

THIS DRAWING WAS PREPARED AT THE SCALES INDICATED. MODIFICATIONS IN THE SCALES MAY BE INTRODUCED - SUCH CHANGES ARE INDICATED BY THE ACTUAL SCALE SHOWN TO DETERMINE THE ACTUAL SCALES OF THIS DRAWING.

No.	Date	Revisions	By

Professional Engineer's name  
**FREDERICK J. KIRCHENHEITER, II**

Professional Engineer's No.  
**068659**

State  
**NY**

Date Signed  
**2/9/07**

Project No.  
**DUM**

Drawn by  
**ROB/MSH**

Checked by  
**MSH**



GENERAL ELECTRIC COMPANY • HUSSON FALLS FACILITY • HUSSON FALLS, NEW YORK  
FINAL DESIGN REPORT COMPARTMENTS 1 AND 3

## COMPARTMENT 1 EXCAVATION AND RESTORATION PLAN

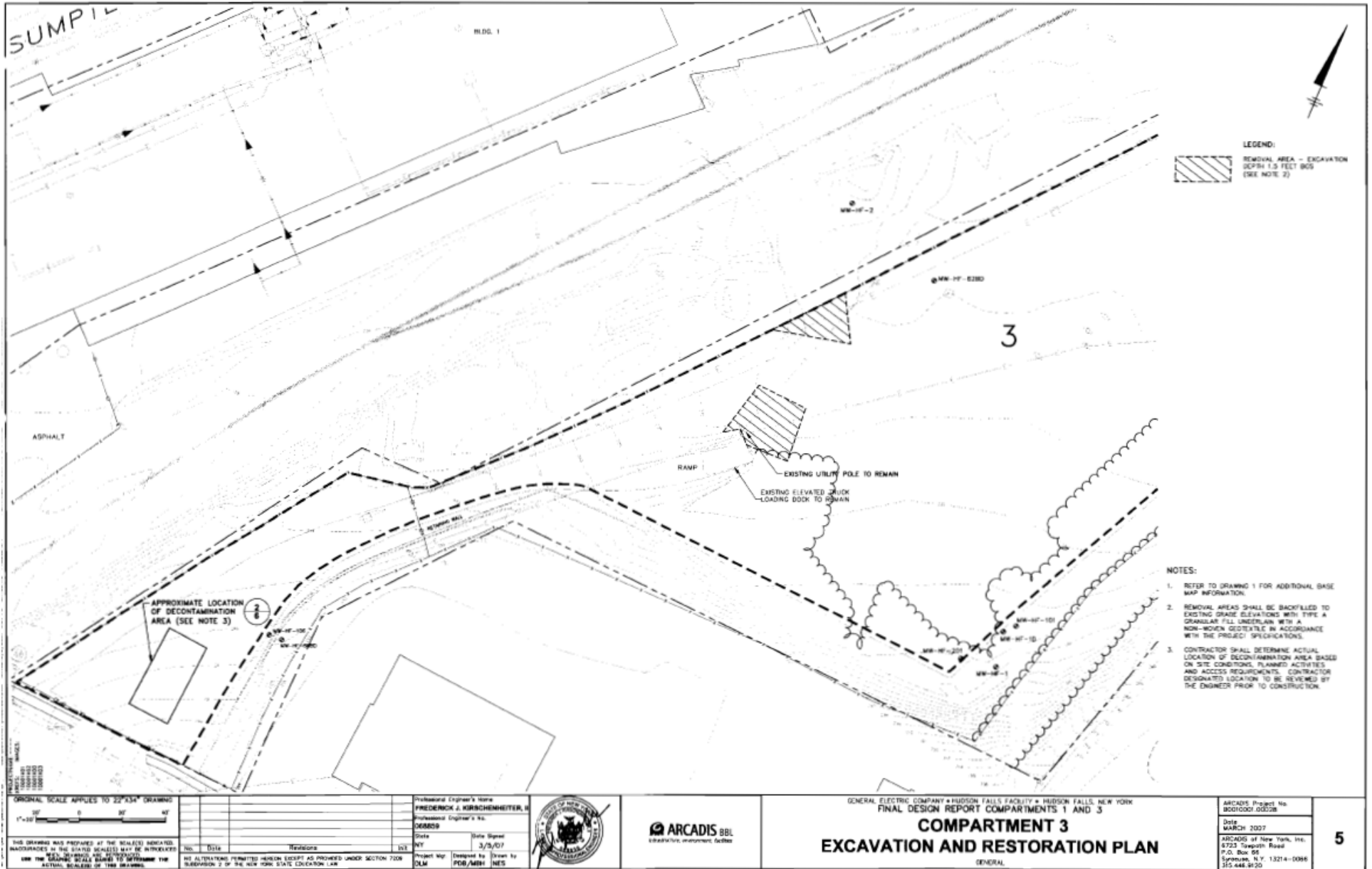
GENERAL

ARCADIS Project No.  
60510001 000208

Date  
MARCH 2007

ARCADIS of New York, Inc.  
P.O. Box 88  
Sprague, N.Y. 13214-0088  
N.Y. REG. NO.

# Map showing excavation area in Compartment 3



ORIGINAL SCALE APPLIES TO 22" X 34" DRAWING  
 1" = 30'

THIS DRAWING WAS PREPARED AT THE SCALE(S) INDICATED. DIMENSIONS IN THE STATED SCALE(S) MAY BE INTERPRETED AS THE STATED SCALE DIMENSIONS TO DETERMINE THE ACTUAL DIMENSIONS OF THIS DRAWING.

No.	Date	Description	By

Professional Engineer's Name  
**FREDERICK A. KIRCHENHEIMER, E**  
 Professional Engineer's No.  
**068609**  
 State  
**NY**  
 Date Signed  
**3/9/07**  
 Project No.  
**OLM**  
 Drawn by  
**PDB/MSH**  
 Checked by  
**MSH**



GENERAL ELECTRIC COMPANY • HUDSON FALLS FACILITY • HUDSON FALLS, NEW YORK  
**FINAL DESIGN REPORT COMPARTMENTS 1 AND 3**  
**COMPARTMENT 3**  
**EXCAVATION AND RESTORATION PLAN**  
 GENERAL

ARCADIS Project No. B012001.00228	<b>5</b>
Date MARCH 2007	
ARCADIS of New York, Inc. 8723 South Road P.O. Box 94 Syosset, N.Y. 11734-0098 516-448-9100	

# Schedule for Implementation GE Hudson Falls

- Soils removal to allow for tunnel drain collection system construction – start in late May 2007, complete by mid July 2007.
- Tunnel drain collection system – start in August 2007; construction scheduled for approximately two years.

# Community Protection

- Air monitoring will be performed during any intrusive activities
- Dust monitoring
- PCB monitoring will be done if dust measurements are elevated above project standards
- Abatement measures included in project plans

# Additional Opportunities for Public Input

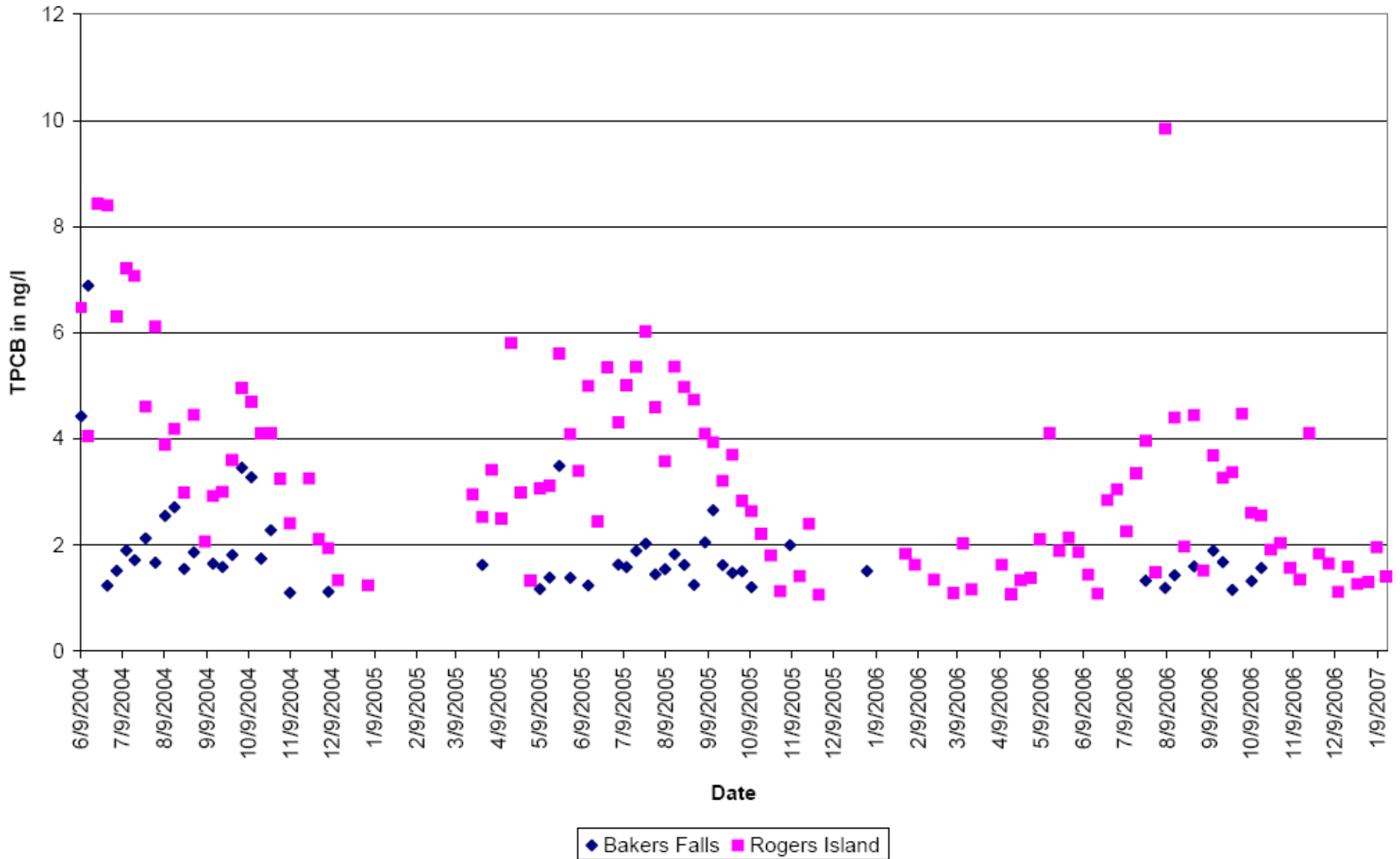
- A second set of availability sessions will be held in late June or early July to inform the public about the details of the TDCS project before construction start up
- If you have any questions or concerns, contact project personnel from NYSDEC, NYSDOH, or GE

# Project Contacts

- NYSDEC: Kevin L. Farrar, 625 Broadway 12<sup>th</sup> Floor, Albany NY 12233-7010  
518-402-9778 - [kxfarrar@gw.dec.state.ny.us](mailto:kxfarrar@gw.dec.state.ny.us)
- NYSDOH: Deanna Ripstein, 547 River Street, Troy, NY 12180-2216  
518-402-7870 - [dmr13@health.state.ny.us](mailto:dmr13@health.state.ny.us)
- GE: Joan Gerhardt, P.O. Box 295, Fort Edward, NY 12828  
518-792-4087



### GE BMP Surface Water Total PCB June 2004 to January 2007



### GE BMP Surface Water Total PCB June 2004 to January 2007

