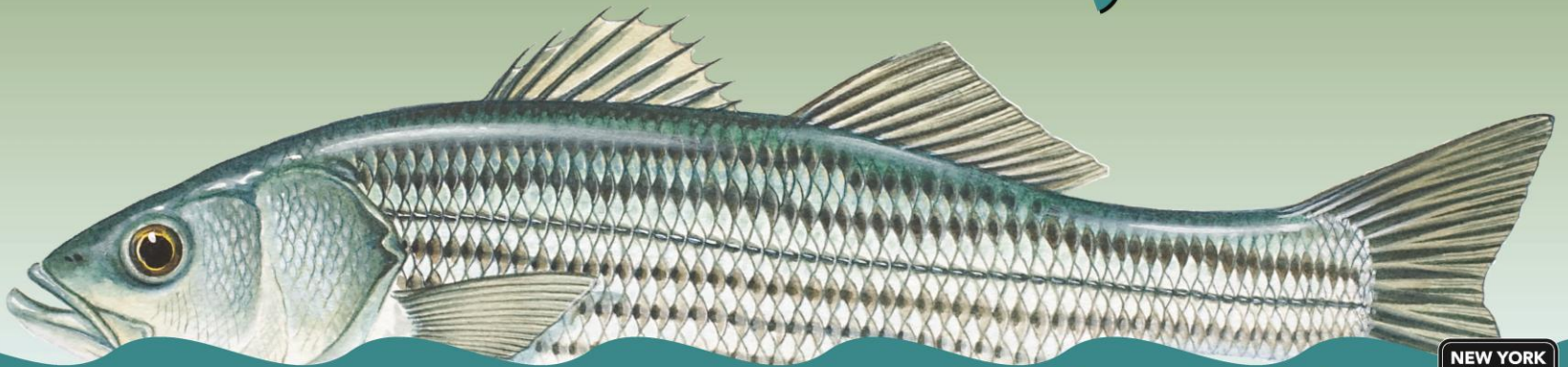


# Hudson River Fish Advisory Outreach Project Update

New York State Department of Health

## Hudson River Fish Advisory Outreach



Can you eat that fish from the Hudson River? [www.health.ny.gov/fish](http://www.health.ny.gov/fish)



PCBs Superfund Site  
Community Advisory Group  
September 19, 2013

# Hudson River Fish Advisory Outreach Project Update

- Funded partners
- Consumption surveys
- Signs and materials
- 2013 outreach
- Moving forward



# Funded Partners

- “River Haggie Outdoors”  
environmental educator  
School, library, camp and environmental  
education programs
- Cornell Cooperative Extension (CCE)  
of Dutchess County  
In-home nutrition education program
- Cornell Cooperative Extension of  
Rockland County  
Work with Americorps and local DOH



# Funded Partners



- River Haggie Outdoors, environmental educator
- Over 4,000 schoolchildren and 2,000 adults
- Exercise with fish pictures to learn the advice



# Nutrition Program Consumption Surveys

2012- CCE Dutchess County compiled surveys from Dutchess, Ulster, Greene and Columbia counties (327)

- nutrition classes and at community settings

18% ate fish or crabs they or someone they knew caught (60)

- Of local fishers, 35% checked they ate Hudson fish
- 61% including “bass/striper” eaters

# Nutrition Program Consumption Survey

- Very small numbers!! – beginning data collection
- Hudson consumers - 11% of total surveys
- 62% women and 48% women under 50
- 51% ate annually
- 32% ate crabs





# Nutrition Program Consumption Survey



- 62% were in zip code 12401 - Kingston
- 26% of clients in 12401 ate Hudson fish
- 74% aware of advice vs 52% of people eating any local fish

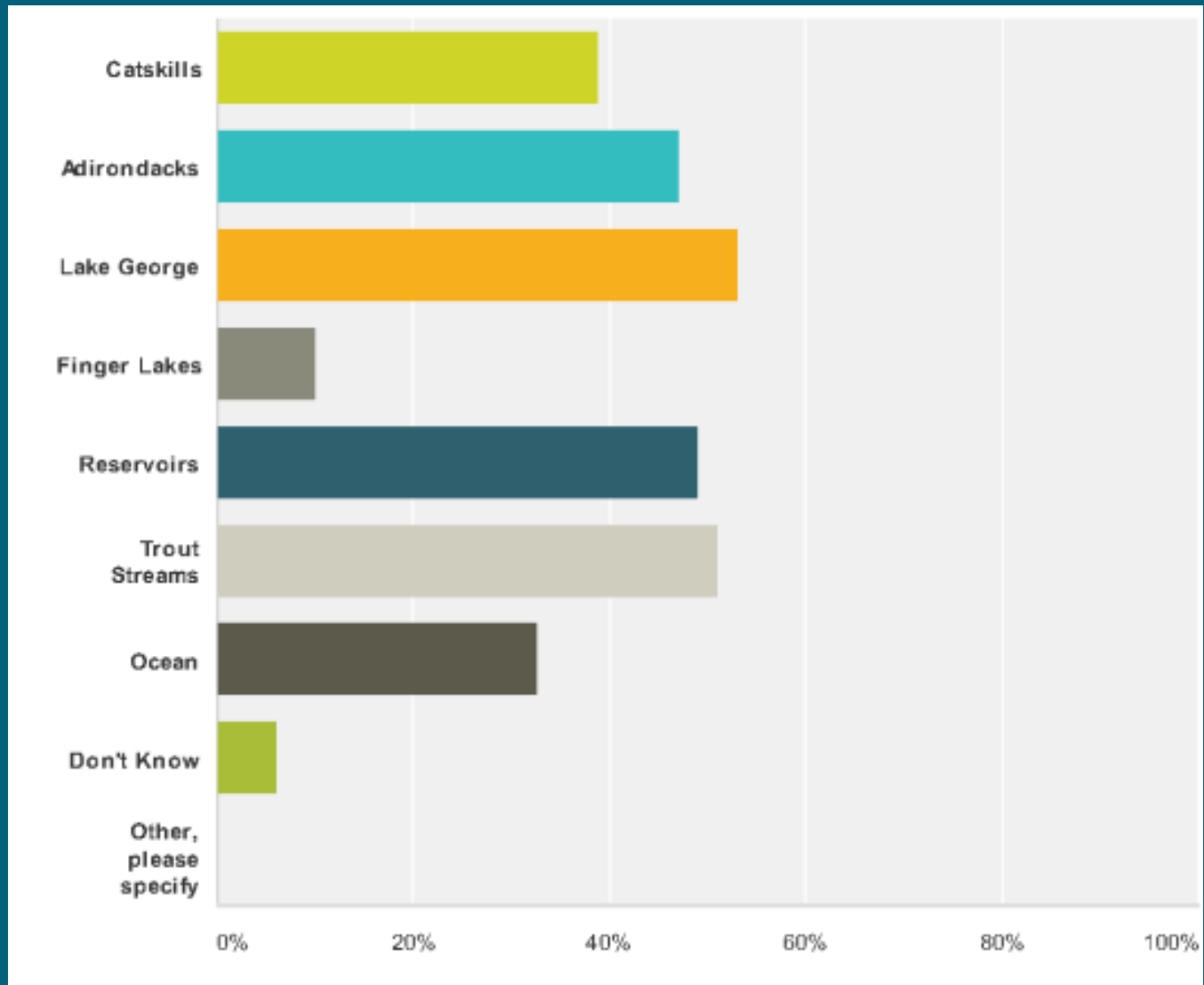
# DOH Hudson Fish Consumption Surveys

- Short convenience samples at 2013 outreach events from Saratoga to Rockland County
- To develop some baselines, see patterns

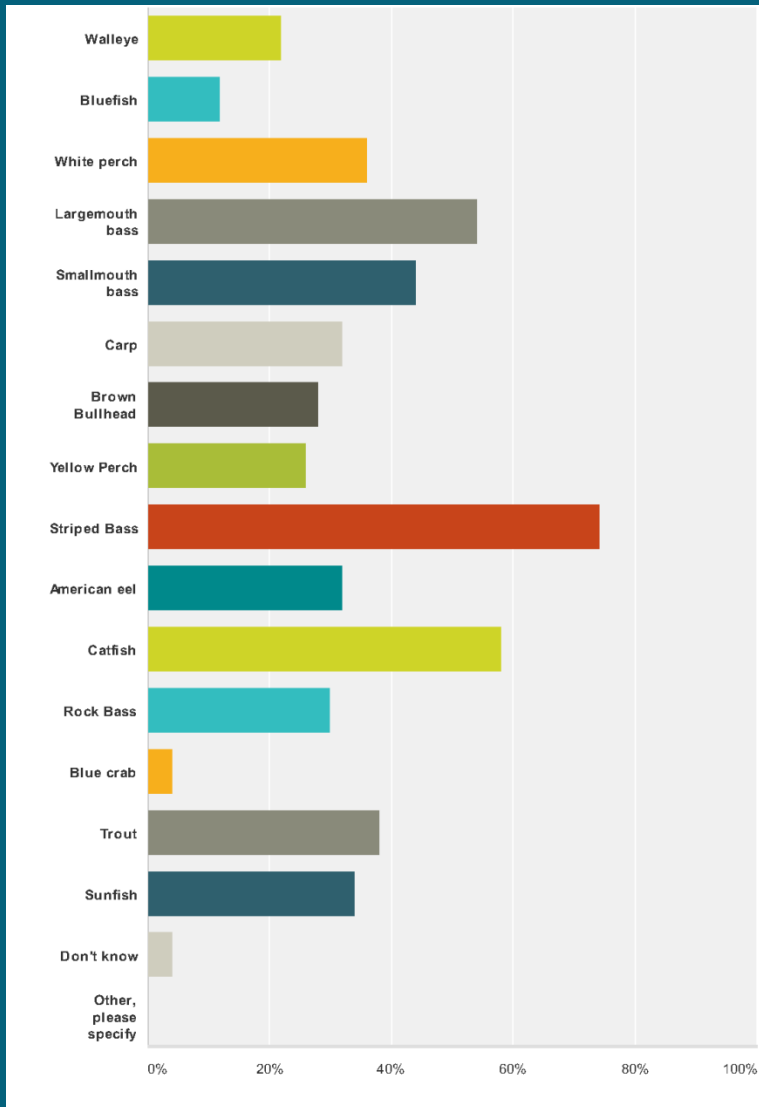




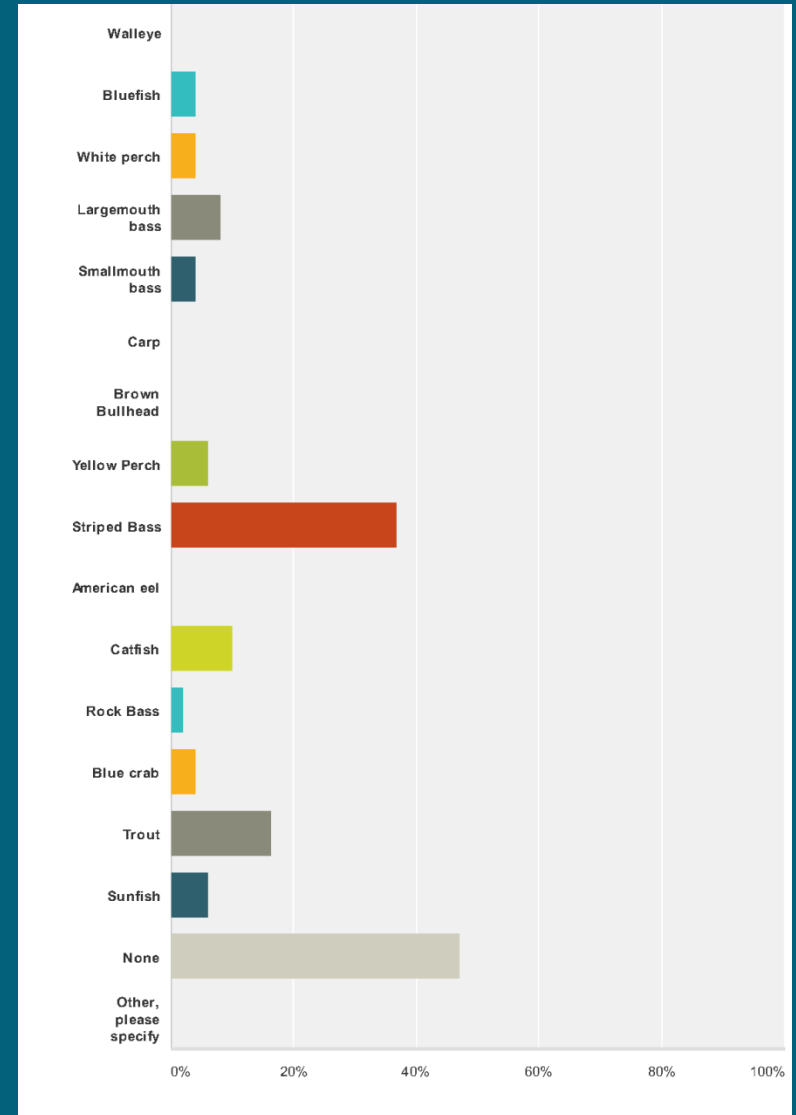
# Where else do you fish?



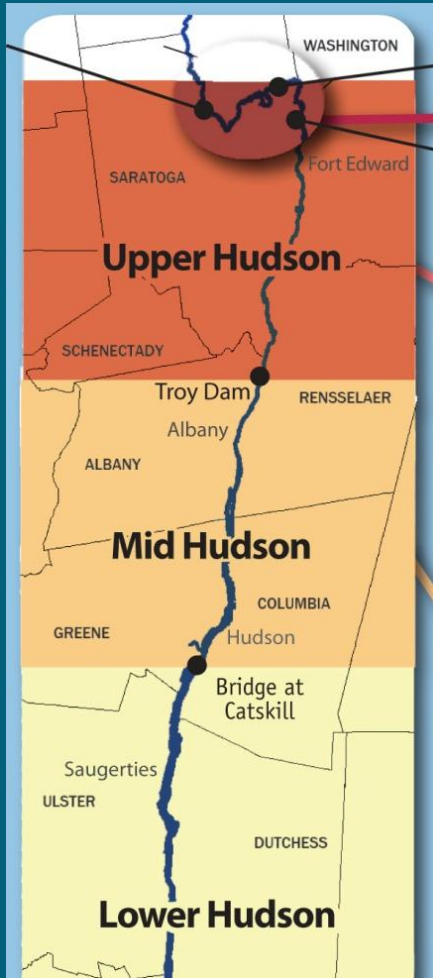
# What do you catch?



# What do you eat?



# Hudson River: Where You Fish



## Upper Hudson

From the Rt. 9 Bridge to Troy Dam

Do not eat fish from the Route 9 Bridge to the Troy Dam.

From Baker's Falls to the Troy Dam, New York's State Department of Environmental Conservation's "catch and release" regulations apply.

**Take No Fish. Eat No Fish.**

## Mid Hudson

From Troy Dam to Bridge at Catskill

Eat up to one meal a month:



Alewife



Rock bass



Blueback herring



Yellow perch

**Do not eat other fish from the Mid Hudson including striped bass**

# Hudson River: What You Catch (Men over 15 and Women over 50)

## Lower Hudson

From Bridge at Catskill to the NYC Battery

**Don't eat:**



White catfish



Channel catfish



American eel\*



Gizzard shad



Striped bass



White perch



Carp



Walleye



Bluefish



Brown bullhead



Smallmouth bass



Largemouth bass



Rainbow smelt



Goldfish



Atlantic needlefish

**Eat up to one meal a month:**

**Eat up to six crabs a week:**



Blue crab

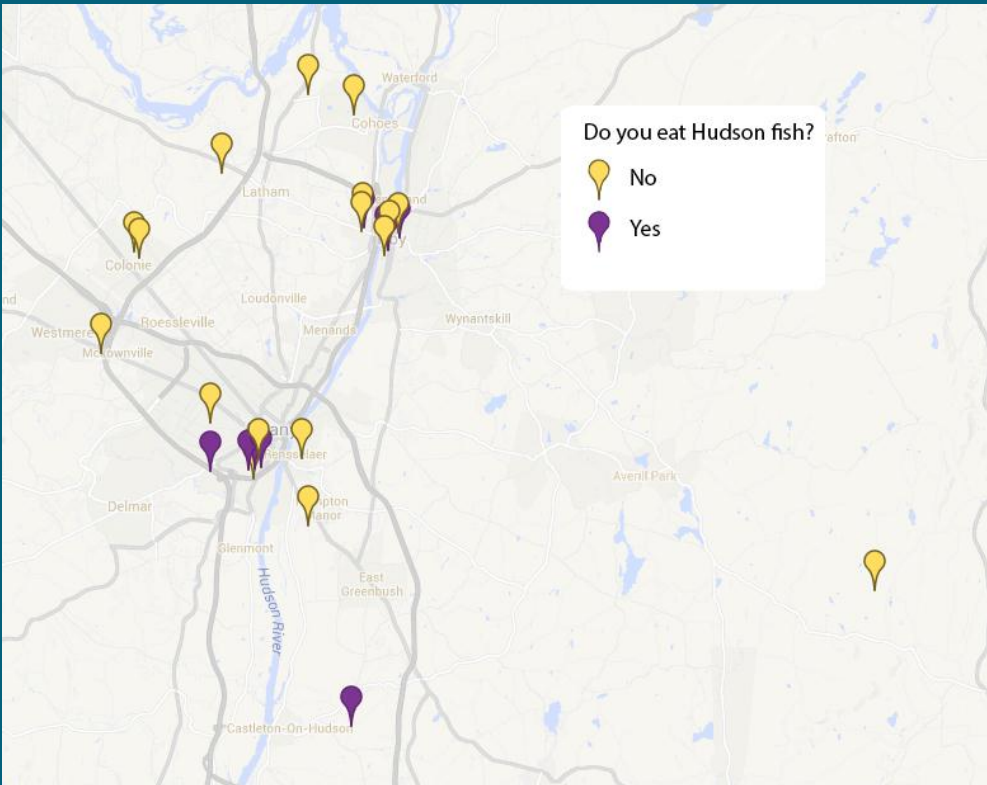
Do not eat the tomalley (green stuff, mustard) or reuse cooking water

**Eat up to four meals a month:**

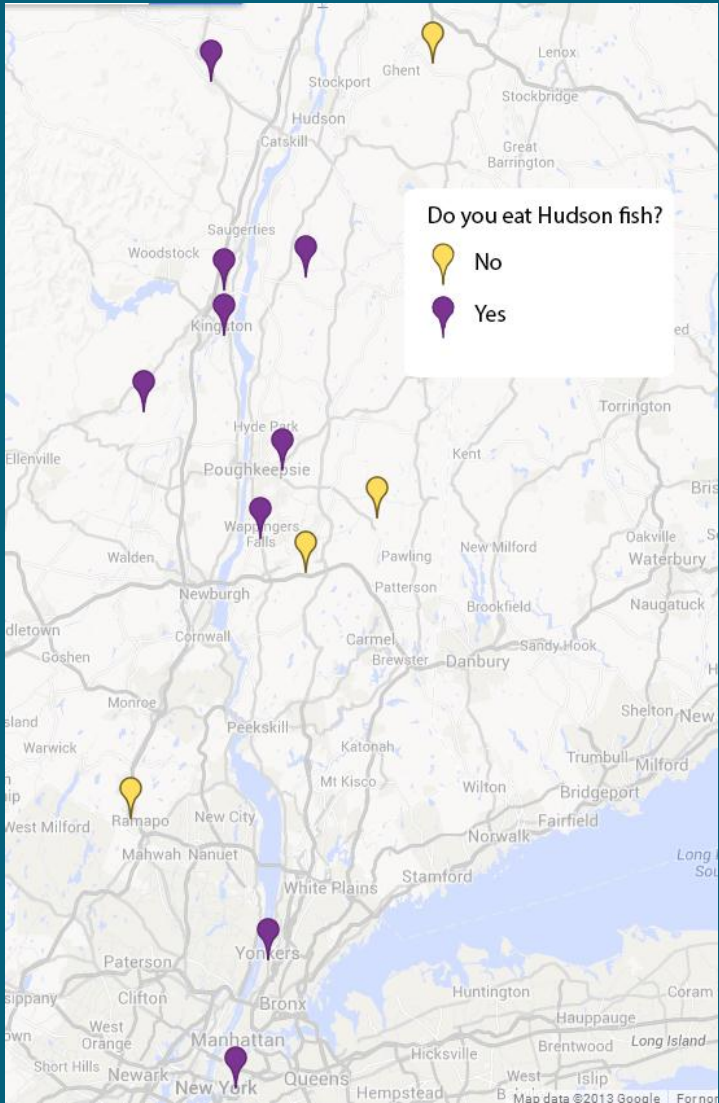
All other species

\*DEC regulations prohibit taking American eel for food from the Hudson River

# Eating Hudson fish



Capital District



Lower Hudson



# Signs South of Troy

## WARNING!

Fish and crabs from these waters contain chemicals and may be harmful to eat, especially for women and children.



### Learn more!

Call NYS Department of Health  
518-402-7800  
800-458-1158

north of the Rip Van Winkle  
Bridge at Catskill

## NOTICE!

Some fish and crabs from these waters may be harmful to eat.



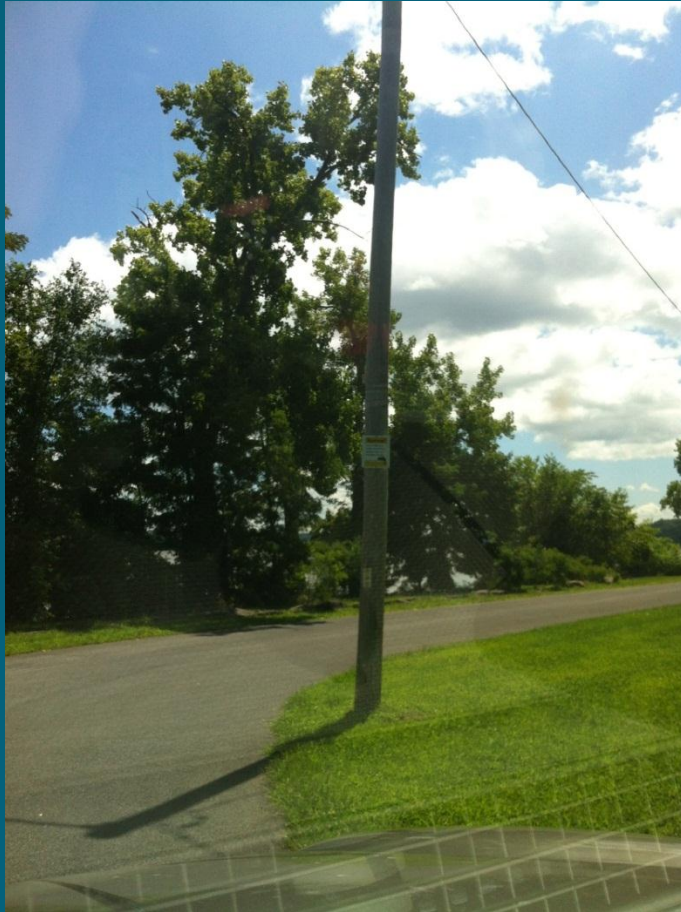
### Learn more!

Call NYS Department of Health  
518-402-7800  
800-458-1158

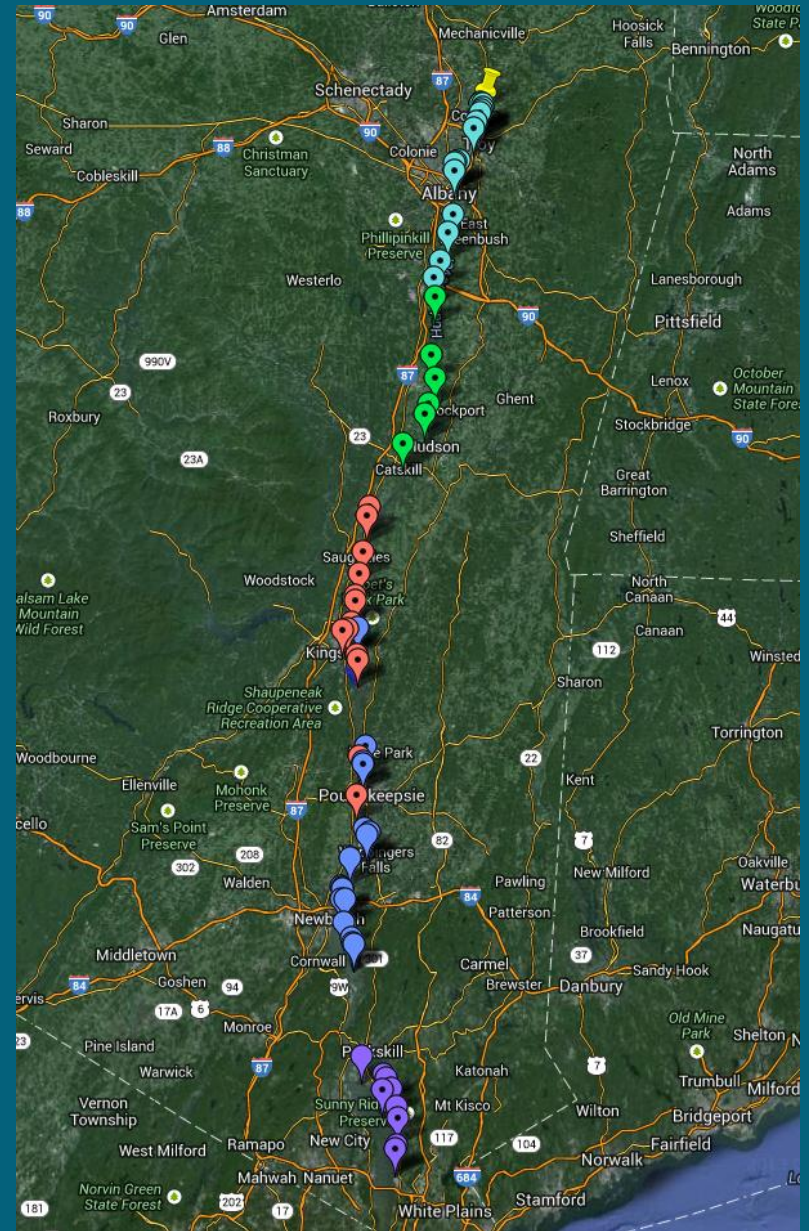
south of the Rip Van Winkle  
Bridge at Catskill



# Advisory Sign Reconnaissance

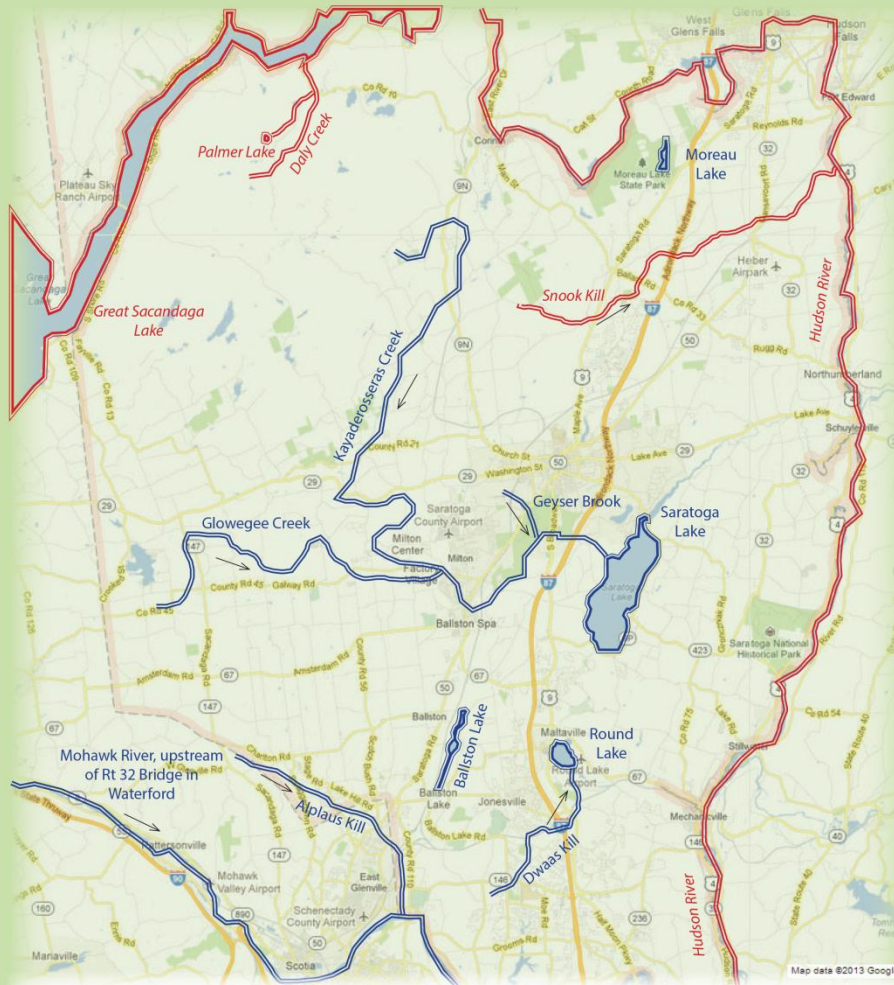


# Advisory Sign Reconnaissance





## Saratoga County Popular Fishing Waters DOH Fish Advisories & DEC Public Access



All outlined waters are DEC public access waters; there may be other fishing access sites in your county.

- General Advisory Applies (whole family 4 fish meals/month)
- Specific Advisory Applies (women under 50 & kids under 15 do not eat, men over 15 & women over 50 see page 2)
- Indicates Dam Location
- County Line
- Indicates stream flow

# County Maps

# Material Distribution

- DEC includes order form with licensing information

January - August

12,000 coloring books

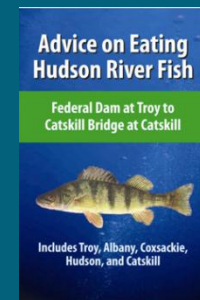
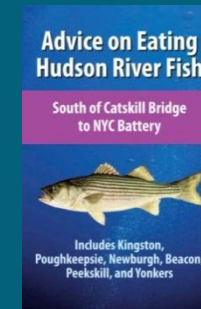
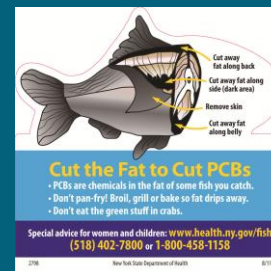
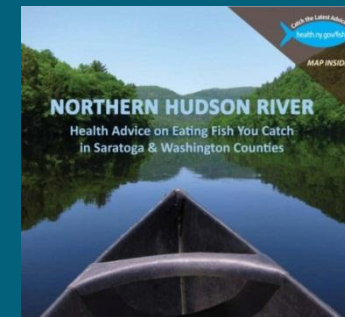
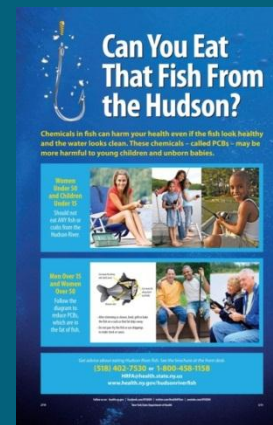
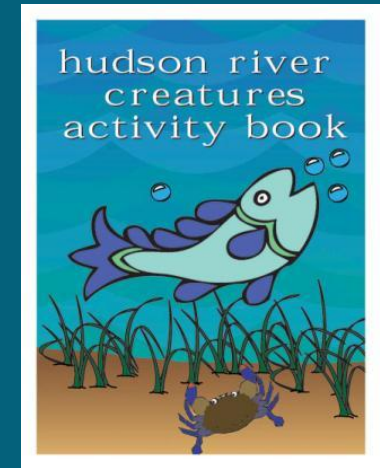
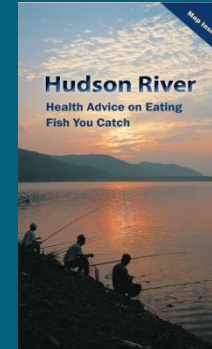
5,000 angler cards

500 posters

6,000 brochures

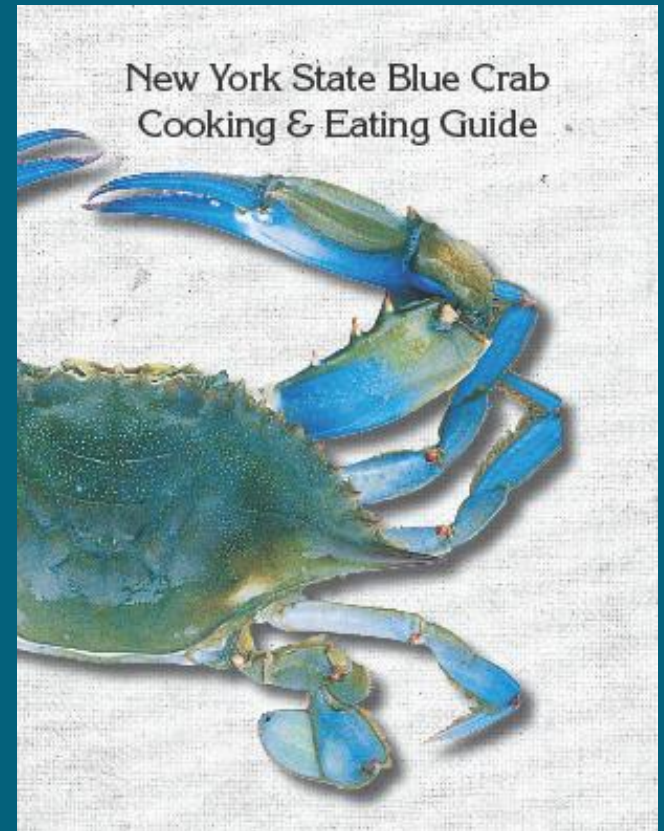
5,500 magnets

2,000 Northern Hudson



# New Materials: Crab Card

- No license required to harvest crabs
- In the nutrition survey, 32% of the Hudson fish eaters ate crabs
- 25% ate the tomalley



# Downstate Less Aware

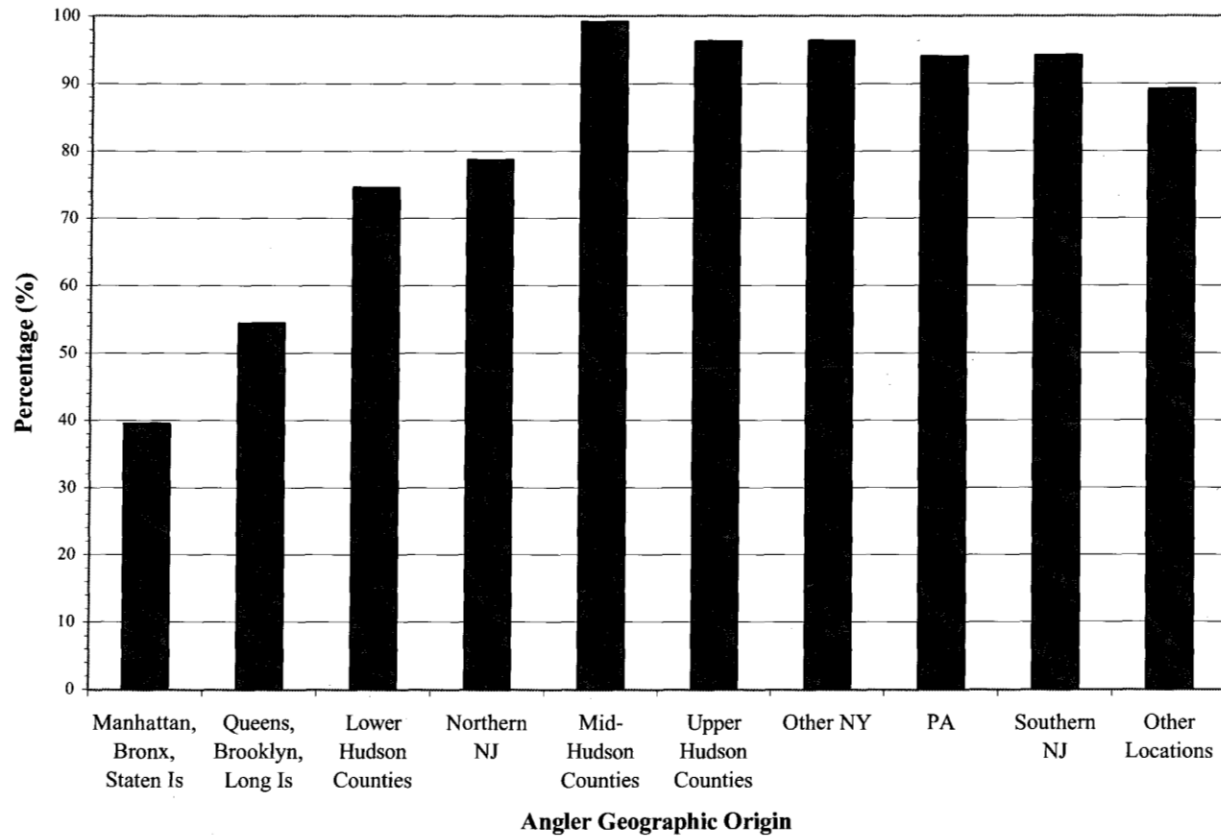


Figure 3.7-7

Percentage of anglers by residence aware of health warnings about eating fish from the Hudson River in 2001.



# “Hooked on our Waters”

Forum in Manhattan  
Saturday October 19th

Cosponsor - NY-NJ Harbor  
& Estuary Program



- NYS Department of Environmental Conservation - I FISH NY & Hudson River Estuary Program
- New York City Health Department
- Hudson River Fishermen's Association
- New York Harbor School & Harbor Foundation
- NY/NJ Baykeeper
- NYC Watertrail Association
- Mount Sinai Medical Center
- NYC Parks
- Hudson River Park Trust

# 2013 Outreach Venues

- Tech Valley High School, Albany
- PCB Forum, Poughkeepsie
- Hudson River Boat and Yacht Club Association
- Hudson River Fishermen's Assn. Family Fishing Derby
- Saint Peter's Church, Yonkers
- Troy River Fest
- Clearwater festival
- GE Kids Day, Albany



# 2013 Outreach Venues

- Saratoga County Fair
- African American Family Day, Albany
- Cardboard Boat Race, Schuylerville
- Columbia, Dutchess, and Ulster County Fairs
- Mississippi Day in Albany
- Hudson Health Plan
- Clarkstown Hunting and Fishing Day



# Moving forward

- Request for Application for funded partners
- Discussion with DEC on supporting Catch and Release signage
- Brochure and signs in Chinese
- Crab card and Hudson Valley brochure
- Continue Hudson fish consumption surveys
- County maps
- Catfish
- Boat and outdoor shows





# Hudson River Waterfowl Consumption Advisory

- Waterfowl between Hudson Falls and Troy have higher PCB levels than from other portions of the Hudson River
- Likely to have higher PCB levels than waterfowl from other areas of the state.
- Advise to harvest waterfowl from other locations on the Hudson River or in other areas of New York State
  - Particularly in the early season when many of the available birds are likely to be resident waterfowl (i.e., non-migratory).
- Advice for the state: Eat up to two meals per month of wild waterfowl, remove skin and fat. Do not eat mergansers.



# Support the Project

- Distribute materials
- Link to our website
- Invite us to events, or to talk to staff or membership

Regina Keenan 518-402-7530

[rmk05@health.state.ny.us](mailto:rmk05@health.state.ny.us)

Audrey Van Genechten

[agl02@health.state.ny.us](mailto:agl02@health.state.ny.us)

[hrfa@health.state.ny.us](mailto:hrfa@health.state.ny.us)

