


Hudson River PCBs Superfund Site



Community Advisory Group Meeting
February 22, 2007



Hudson River
PCBs SUPERFUND SITE

Overview of Remedial Action Work Plan #1 (Contracts 1 and 2)



Why is a RAWP necessary?

- GE initiated RFP process for all 6 contracts (March 06)
- GE finalized agreements on first two contracts (January 07)
- RAWP incorporates contractor information into Final Design plan
 - Provides details for Final Design
- Development of RAWP required by CD
- EPA approval of RAWP needed before work begins

Three RAWPs to be Developed

- **RAWP #1: Contracts 1&2**
 - Facility site work and rail yard construction
- **RAWP #2: Contract 3A**
 - Construction of treatment and transport facilities
- **RAWP #3: Contracts 3B-6**
 - Dredging and facility operations

RAWPs Include:

- **Description and sequencing of construction activities**
- **Monitoring requirements to ensure performance standards are met (QA/QC Plans)**
- **Equipment staging**
- **Key safety elements**

Facility Site Work (Contract 1)

- Contract awarded to DA Collins, Mechanicville, NY
- Work includes construction of:
 - Access road
 - Processing facility areas
 - Wharf area
 - Rail yard grading
 - River mooring posts near Lock C7
 - Work support marina on W. River Road

Facility Site Work

- **Towpath Rd. to be used for initial mobilization and construction**
 - Typical construction equipment and work vehicles
 - CP flagman present when crossing tracks
- **Construct access road**
 - Built simultaneously from Rt. 196 and facility site
 - Excavate, place stone and pavement, markings and signs
- **Drive piles for bridge over Feeder Canal**

Facility Site Work (Cont'd)

- Flashing light installed at Rt. 196 intersection
- Road construction to take about 3 months
- Towpath access will cease when access road is completed
- Install 7-foot-high security fencing around site perimeter
- Construct admin area (work trailers, parking)
- Install 267,000 sy geomembrane liner

Facility Site Work (Cont'd)

- **Install utilities**
 - **Potable water supply**
 - **Connect water to Village main on East St.**
 - **Fire water supply line with hydrants**
 - **Electrical and phone service**
- **Construct internal roads (concrete or asphalt)**
 - **Includes road crossing over Bond Creek**
- **Widen wharf area by 65 feet**
- **Install crushed stone, rip-rap, concrete retaining walls**
- **Construct wharf and install barge winch system**

Additional Contract 1 Work

- **Install 4 moorings and turning dolphin south of Lock C7**
 - Crane and pile placement equipment on barge will be used
- **Build work support marina on W. River Road**
 - Improve access road (old Rt. 29)
 - Paving of roads and parking areas
 - Install fencing, gates, trailers
 - Install electrical power
 - Install gangway, floating docks

Rail Yard Construction (Contract 2)

- **Contract Awarded to RailWorks Track Services, NYC**
- **Work Includes:**
 - 5 miles of track
 - Rail yard construction
 - Construct rail support building
 - Construct track maintenance facility
 - Install weigh-in-motion scale

Additional RAWP Information

- Equipment staging plans
- QoLPS construction field sampling program
 - Dust, opacity, odor, noise, lighting monitoring
- Traffic control plan and proposed truck routes
- Stormwater pollution prevention plan
- Noise and lighting control plans
- Railroad crossing plan
- Construction quality control and assurance plan

Quality Control and Quality Assurance

- Program of inspections, tests and production controls
- Verifies requirements are met
- Prevents problems from occurring
- System for tracking corrective measures
- Quality control implemented by contractor
- Oversight and verification of the quality control program by construction manager

Remedial Action Health and Safety Plan

- Defines H&S requirements, guidelines
 - Safety goal is zero incidents, zero injuries
- Identifies project safety team
- Identifies potential hazards during field work and protective measures to prevent hazards
- Defines emergency protocols
- Describes project team training and expertise

Remaining Contracts

- **Contract 3B – Operation of processing facility**
- **Contract 4 – Dredging operations**
- **Contract 5 – Habitat construction**
- **Contract 6 – Rail yard operations**

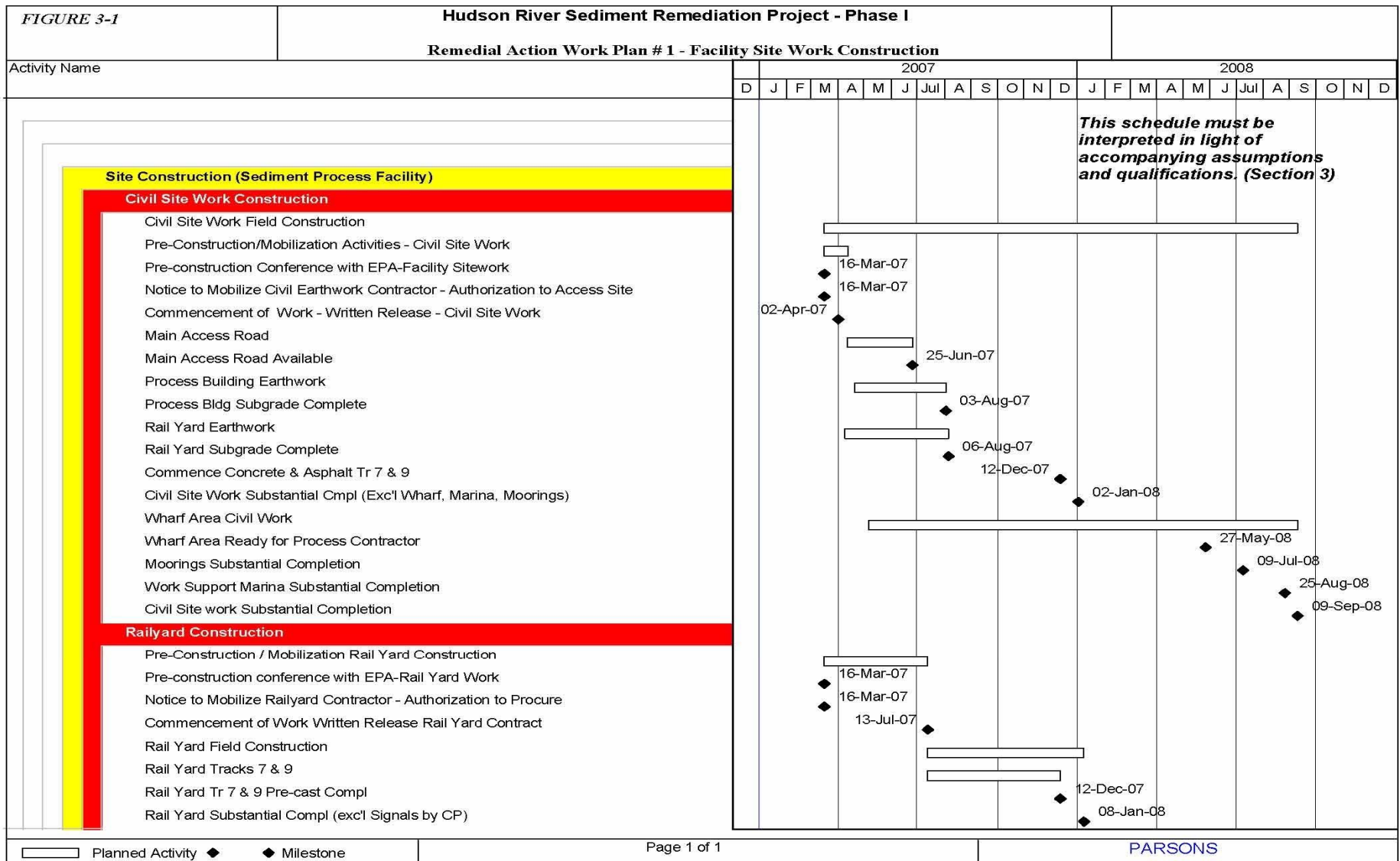
Questions/Comments



Update on Project Schedule



Construction Schedule in RAWP #1



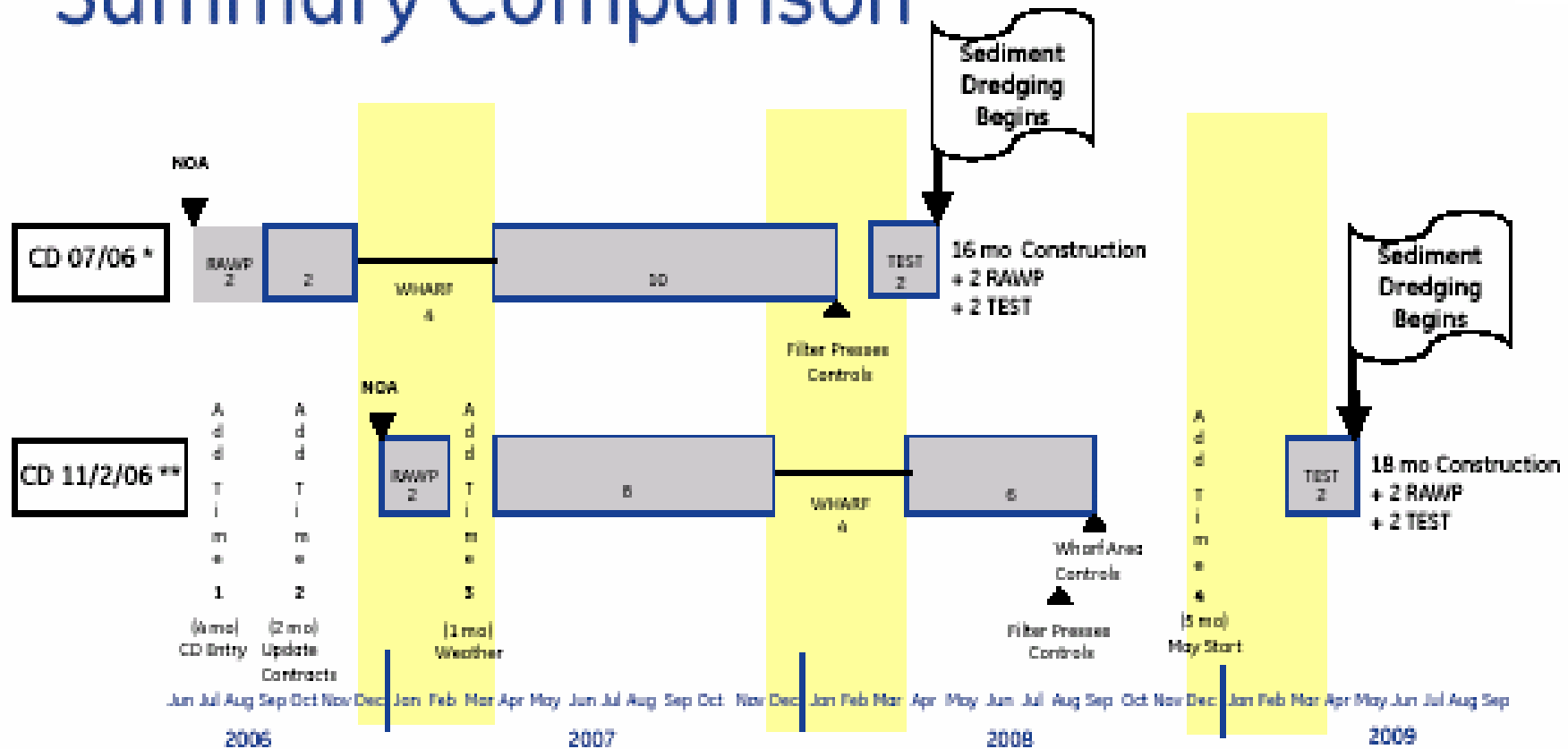
Project Schedule (2007-2008)

- **Begin facility construction (April 07)**
- **Wharf excavation (Winter 07-08)**
- **Wharf construction (Spring - Summer 08)**
- **Rail construction (Summer - Fall 07)**
- **Moorings (Summer 08)**
- **Work support marina (Summer 08)**

Construction Schedule in RAWP #1

- Based on numerous assumptions:
 - EPA approves RAWP #1 by March 1, 2007
 - Facility site access and lease agreements are executed to enable site mobilization by March 16, 2007
 - Access agreement for crossing existing rail track is executed by March 16, 2007
 - Work support marina access and lease agreements are executed by April 1, 2008
 - Site leases, railroad agreements and public utility agreements are executed prior to issuing Notices to Mobilize for Contracts 1 and 2

Summary Comparison



* March 21, 2006 Forecast

** November 2006 Forecast

Add Time:

1 - CD Entry anticipated early July '06, actual entry early November '06 - 4 months

2 - Contract proposals expired 09/01/06, validation/revision required based on date of CD entry - 2 months

3 - RAWP approval anticipated originally early September '06, now forecast February '07 (mid-winter). Wait on weather - 1 month

4 - Complete construction, wait for following May to begin dredging - 5 months

Dates represented by schedule assume agreement on contracts, design approval, property access, weather, third party actions, etc are all met.

Questions/Comments

