

# What We're Building



- > Processing and Transportation Facility
  - Water Treatment Plant
  - Dewatering Facility
  - Rail Yard
  - Barge Unloading Facility/Wharf

# What We're Building

- > Access road to Route 196
  - Including bridge over Feeder Canal and culvert in Bond Creek
- > Internal haul roads (plus four culverts)
- > Excavate 7 acres of stormwater basins; install 14,500 feet of drainage pipe
- > Install 267,000 sy protective liner; weld in place
- > Install potable water lines, electrical and phone service

# What We're Building

- > 40,000-square-foot dewatering building
- > 2 million gallon/day water treatment plant
- > Widen canal at wharf area by 65 feet
- > Construct wharf and install barge winch system
- > Install five miles of rail track and four turnarounds

# Where We Are

- > Construction began April 23
- > Recently completed 150 work days and over 138,000 personnel hours without a lost time incident
- > D.A. Collins — facility site work
- > RailWorks — work in rail yard
- > Severson — constructing processing, treatment facilities
- > 100+ workers, mostly union, on-site
- > More than 80 local businesses participating

# Where We Are

- > Earth-moving activities completed except at wharf
- > Access road to Rt. 196 open
  - to be paved early October
- > Feeder Canal bridge and Bond Creek culverts completed
- > Internal haul roads completed except for paving
- > Temporary electrical power installed
- > Installation of drainage system nearing completion

# Where We Are

- > Geomembrane liner in progress
- > Grading of rail yard area completed
- > Installation of rail track progressing
- > Major pieces of process equipment approved and in fabrication



# Aerial View of Site



**Aerial view of site (August 1, 2007)**

# Site Grading Activities Substantially Complete





# Internal Roadways Prepped for Pavement



# Stabilize Topsoil Areas to Control Dust





# Stormwater Pipe and Manholes



# New Drainage Beneath Rail Yard





# Placing Rebar for Equalization Tank





# Awaiting Concrete



# Placement of Concrete





# Coarse Material Staging Area



# Rebar Installation





# Two of Six Completed Retaining Walls





# Staging of Liner Materials



# Installation of Geomembrane Liner



# Preparing Seams for Welding





# Liner in Coarse Material Staging Area

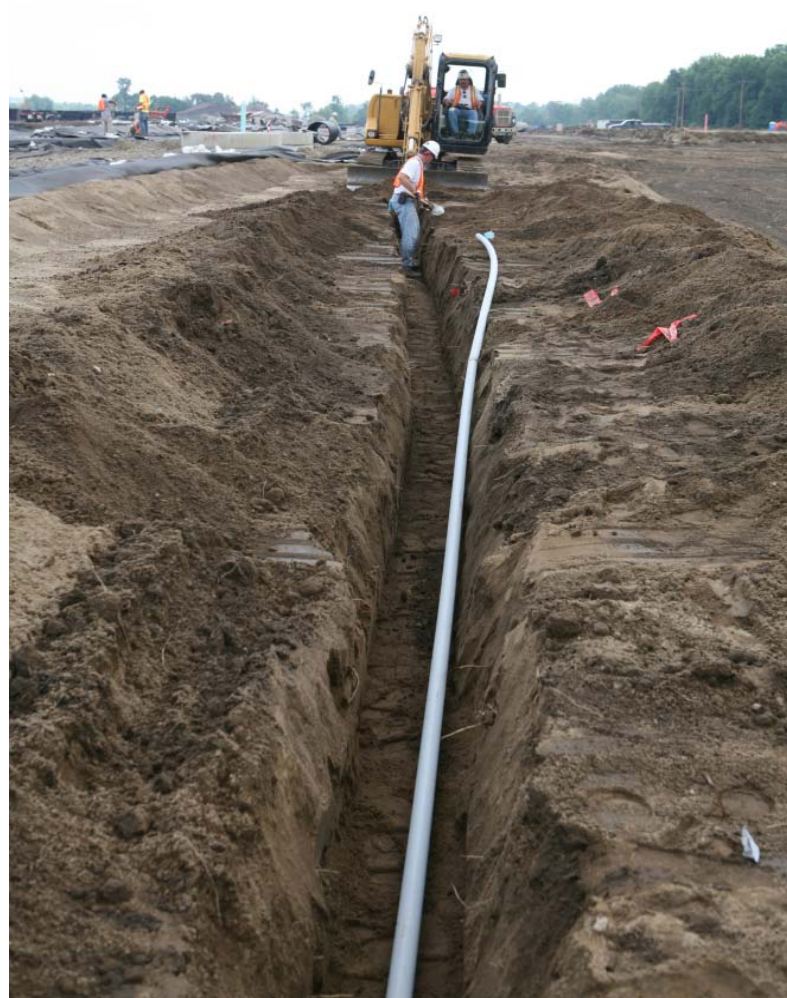


# Temporary Power Brought to Site





# Electrical Distribution On Site



# Rail Yard Construction

- > Install five miles of track
- > Install two miles of rail yard service roads
- > Construct 7,000-square-foot rail support service building
- > Install scale to weigh rail cars in motion

# Stone Sub-base in Rail Yard





# Staging of Rail Tie Materials



# Building Skeleton Track





# Switches in Rail Yard



# Placement of Top Ballast Stone





# Rail Support Building





# Wharf Construction

- > Widen canal by 65 feet
- > 1,500 feet of shoreline; 1,200 square yards of elevated deck
- > 28,000 square yards of unloading wharf
- > 5,000 square yards of work wharf

# Grading at Wharf



# Drilling Rock Socket for Pipe Piles at Wharf





# Route 196 Access Road and Feeder Canal Bridge

- > Two-mile paved road
- > Built bridge over Feeder Canal and culvert to cross Bond Creek
- > Installed flashing traffic signal at Rt. 196 intersection
- > Installed guard rails and signage
- > Road opened to public use August 16
- > Paving to be completed early October

# Flashing Signal Installed at Rt. 196



# Guard Rails and Signage Installed





# Construction of Bridge



# Installation of H-piles for Abutments



# Construction of Bridge Abutments





# Bridge Opens to Public



# Monitoring

- > Noise measurements collected along property lines
  - More than 3,800 measurements
  - 99.6% below EPA control and standard levels
  - No exceedances since July 1
- > Installed specialized backup alarms on 21 pieces of equipment
- > Eliminated non-critical truck traffic along property boundary
- > Installed shrouds and noise barriers for certain work activities

# Safety a Priority

- > 600 workers completed safety training
- > More than 700 employee safety observations
  - Part of peer-to-peer safety program
- > Reviews resulted in identification of 14 near misses
  - All resolved before safety issue arose
- > 2 first aid cases, 1 medical treatment
- > Safety planning and reinforcement resulted in more than 138,000 personnel hours without lost time incident or major medical case



# What's Next

- > Paving of access road in early October
- > Completion of steel pipe piles at wharf
- > Continue placement of geomembrane liner
- > Completion of rail yard track and switches
- > Construction of buildings/equipment:
  - Water treatment plant
  - Dewatering building
  - Enclosed staging areas for fine material
  - Separation equipment at wharf

